

DRIVING CHANGE

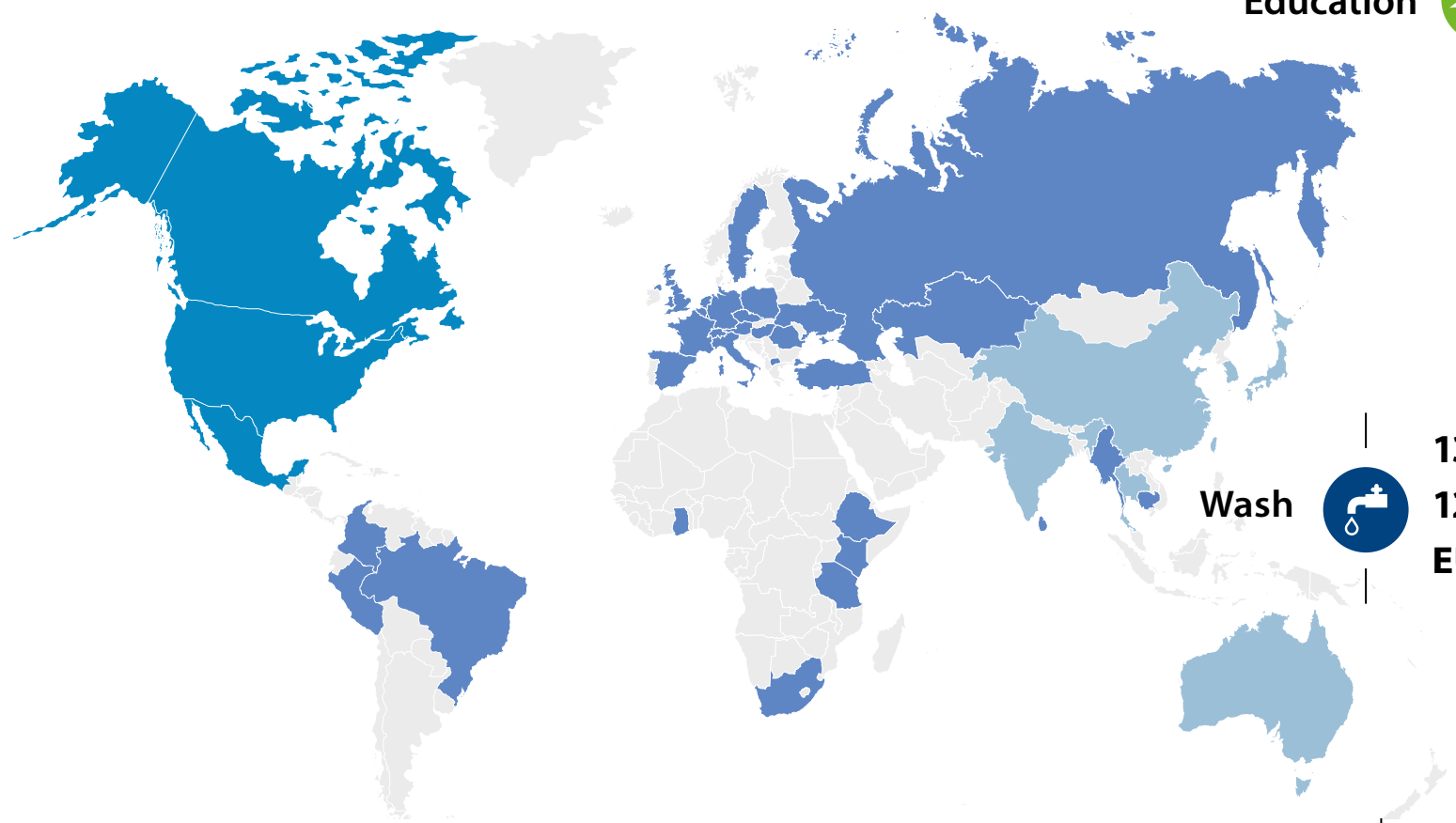


Foreword	3
Covid-19 and the year 2020	4
Who we are	6
The projects we support	10
Commitment to SDG 4	12
SDG TARGET 4.3:	
Challenge:	
Specialized training and social inequalities	16
Our contribution to equal access to specialized training	18
SDG TARGET 4.4:	
Challenge:	
Youth unemployment and training gap	20
Our contribution to facilitating access to specialized and vocational training	22
Commitment to SDG 6	24
SDG TARGET 6.1:	
Challenge:	
Access to clean drinking water	26
Our contribution to clean drinking water	28
SDG TARGET 6.2:	
Challenge:	
Access to adequate sanitation	30
Our contribution to providing adequate sanitation	32
Our contribution to social entrepreneurship	34
Our emergency relief activities	36
Our contribution to emergency relief during the pandemic	38
Results 2020	40
Thank you!	42



Project funding worldwide in 2020

110,548 people benefited from 89 projects at a cost of EUR 1.72 million



- Knorr-Bremse Global Care e.V.
- Knorr-Bremse Global Care North America Inc.
- Knorr-Bremse Global Care Asia Pacific Ltd.

Education



38 funded projects
5,170 beneficiaries,
EUR 786,136 invested

Wash



13 funded projects
12,895 beneficiaries,
EUR 210,257 invested

Emergency



34 funded projects
87,222 beneficiaries,
EUR 714,742 invested

Social infrastructure



4 funded projects
5,261 beneficiaries,
EUR 8,690 invested

Dear Reader,

2020 was an extraordinary year, and like the rest of the world, Knorr-Bremse Global Care was affected by the various challenges brought by the Covid-19 pandemic. They made us all aware of just how closely interconnected our global community is. The Covid-19 pandemic has shone an unflinching light on global inequalities – and is likely to exacerbate them, highlighting once again the relevance of our worldwide organization and its activities. The events of the past year greatly strengthened our resolve to continue pursuing our goals with maximum energy.



The figures for 2020 document the scope of our work: Despite the global turmoil, we were able to successfully organize our activities and focus on delivering results, thanks to generous donations from the various Knorr-Bremse Group companies in Europe, the USA and Hong Kong. In 2020, Knorr-Bremse Global Care invested a total of EUR 1.72 million in 89 projects around the world, opening up better life prospects for 110,548 people. We achieved these results in collaboration with our successfully established regional organizations: Knorr-Bremse Global Care North America Inc. and Knorr-Bremse Global Care Asia Pacific Ltd.

2020 saw Knorr-Bremse Global Care e. V. in Munich celebrate a significant anniversary: We have now been focused on improving the lives of people in need for no fewer than 15 years. Since Global Care was first established in 2005, we have supported more than 850,000 people through the projects we have funded. With these activities, we hope to make a positive contribution to the Sustainable Development Goals (SDGs) of the United Nations. The main focus of our work is on SDG 4 (Quality Education) and SDG 6 (Clean Water and Sanitation). In all our project work we aim to keep improving our own approaches, methods and processes.

During the 2020 pandemic we set up a Covid-19 rescue fund to support current programs and long-term partner organizations, while also continuing to develop our ongoing program work. Tightening our strategic focus was another important task in 2020 aimed at ensuring that we can deploy our resources even more effectively in the future. We developed specific goals for our key support areas: education and WASH (water, sanitation and hygiene), and intend to monitor these by means of evaluation studies. To enhance the effectiveness of our work, we aim in the future to enter into more strategic partnerships so that we can provide long-term support to organizations and help them develop and scale up successful programs. We will accomplish this in tandem with all the Knorr-Bremse Global Care organizations, Knorr-Bremse employees and our partners.

I hope you enjoy the fascinating and informative insights in this Knorr-Bremse Global Care Annual Report.

Julia Thiele-Schürhoff,
Chair of Knorr-Bremse Global Care

Covid-19 – the major challenge



In 2020, the work of Knorr-Bremse Global Care was significantly affected by the Covid-19 pandemic, the associated lockdown and social distancing requirements and their impact on daily life. Established events and workshops moved online and some ongoing projects had to be temporarily suspended or rescheduled. Most partner organizations rose to meet the extraordinary challenges – some with very creative and innovative solutions – and were able to continue their important work, even during the pandemic. We were able to support our project partners in a number of different ways.

As well as our funding of long-standing partner organizations and ongoing projects during the pandemic, our long-term support categories (WASH and education) proved more relevant than ever.

The pandemic triggered an education crisis that clearly shows the challenges facing global education systems. Cancelled school lessons as well as homeschooling illustrate how heavily pupils' school performance is influenced by their family's socio-economic background. So we are particularly pleased to report that the majority of the education programs we fund have already resumed, at least partially.

At all times, but particularly during a pandemic, poor sanitation and inadequate water supplies provide a breeding ground for disease. Projects in our WASH support category improve access to fresh water and sanitary facilities and promote good hygiene, thereby helping to stem the pandemic.

Many of the projects we support were successfully implemented in 2020, despite the challenges. Some examples of them are described in this report.

The year 2020

January

Growing steadily



15th anniversary

On January 18, Knorr-Bremse Global Care celebrated its 15th anniversary. It can look back on a successful past that has improved life prospects for more than 860,000 people. The organization was founded in 2005, on the initiative of Heinz Hermann Thiele, to provide fast, effective assistance to the people affected by the tsunami in South-East Asia.

April

Standing together



Covid-19 rescue fund

In March 2020, the WHO declared the coronavirus outbreak to be a global pandemic. In April, Knorr-Bremse Global Care decided to set up a rescue fund in order to sustain the valuable work of long-standing partner organizations and ongoing projects. Measures ranged from distributing food to needy families and creating online learning opportunities to laptop donations and hygiene education.

June

Finding creative solutions



Online training courses

Together with two Northeast Ohio nonprofit organizations – Boys Hope Girls Hope and Motogo – Knorr-Bremse Global Care North America funded a training course ("Kick Start Hope") to youth from under-resourced communities focused on preparing them for post-secondary and career success. Thanks to creative solutions amid the pandemic, the STEM-based program quickly and successfully pivoted in 2020 from in-person classes to online sessions.

September

Carrying on



Partial resumption of education programs

Education programs are able to start up again in South Africa following the lockdown, provided they meet hygiene and safety standards. Education is a key criterion for giving children fair opportunities to participate in society. Educational services for disadvantaged young people are all the more important during a pandemic. One such scheme is the Masifunde program supported by Knorr-Bremse Global Care in South Africa, which trains motivated children and young people to be changemakers.

December

Involving employees



Vote on Christmas donation

In 2020, the employees of Knorr-Bremse in Munich held their usual vote on the distribution of the local Christmas donation. One of the winners was the Lichtblick Hasenberg care facility, which is close to the Munich site and helps children and young people in greater need of support and care, preparing them for an apprenticeship and successful entry into the job market.

Who we are

KNORR-BREMSE global care

Knorr-Bremse Global Care is a global non-profit organization set up by Knorr-Bremse to offer new prospects to people who find themselves in need through no fault of their own. Knorr-Bremse Global Care supports projects run by partner organizations in three areas: education and WASH (water, sanitation and hygiene), as well as emergency relief, for example following natural disasters.

Knorr-Bremse Global Care prioritizes activities in countries with Knorr-Bremse sites, so that it can maximize direct contact with the projects it supports. This proximity to projects raises awareness among local employees and gives them the opportunity to play an active part.

Knorr-Bremse Global Care was set up in 2005 following the devastating tsunami in South-East Asia and has since reached more than 860,000 people through almost 400 projects. In a demonstration of its corporate social responsibility, the Knorr-Bremse Group supports Global Care through regular donations.

Our global structure

Knorr-Bremse Global Care operates on a global scale, but we ensure that our work is firmly anchored in local communities through our three regional organizations: Knorr-Bremse Global Care North America Inc., Knorr-Bremse Global Care Asia Pacific Ltd. and Knorr-Bremse Global Care e. V. in Munich.

All three organizations consist of an honorary Executive Board and members, all of whom are employees of the Knorr-Bremse Group. The Munich organization ensures coherence and coordination, both in terms of strategic global orientation and external communications. It coordinates all issues of relevance to the three Global Care organizations. The two new organizations – Knorr-Bremse Global Care North America Inc. based in the USA and Knorr-Bremse Global Care Asia Pacific Ltd. based in Hong Kong – are legally independent and have their own budgets to support projects. They select the projects they wish to support independently, finance them with their own funds and monitor their progress.

We use regional proximity to the projects to further enhance the impact of our activities. If you know a country's culture, speak the language and are familiar with local needs, you can work more effectively in the long term and reach people on the ground more easily. It also enables us to expand our local activities in countries with Knorr-Bremse sites. We are particularly keen to involve Knorr-Bremse employees. Our new regional structure enables us to integrate employees into the work of Knorr-Bremse Global Care over the long term, foster a constant exchange of ideas and ensure greater long-term identification with our activities.

The members of Knorr-Bremse Global Care e. V.

Left to right:
Andreas Wimmer,
Julia Thiele-Schürhoff,
Nadia Thiele,
Eva Seifert,
Alexandra Rappl,
Rasso Böck,
Mario Beinert





Our success factors

For us, a supported project is successful if it achieves its set aims, contributes to positive, lasting changes in the target group and makes efficient use of the resources we provide. Factors that have emerged as key to the success of projects are: identifying key support categories, pursuing long-term strategic partnerships with reliable partner organizations, clearly defining goals and how to measure them, and making effective use of the expertise of Knorr-Bremse employees.

Since 2016, Knorr-Bremse Global Care has been focusing its project work primarily on countries with Knorr-Bremse sites, of which there are more than 30 around the world. In addition, the organization supports development projects in ten other countries, in which it has been active for years: Cambodia, Colombia, Ethiopia, Ghana, Kenya, Myanmar, Peru, Sri Lanka, Tanzania and Ukraine.

Knorr-Bremse Global Care is a company-financed non-profit organization that supports aid projects and sees itself as a professional partner for funding development projects around the world, working closely with international and local partner organizations. Our partners are responsible for on-site project management, efficient, impact-focused project implementation and project documentation.

In order to consistently track implementation of objectives and assess the results of our work over the long term, we will in future be commissioning external specialists to monitor selected projects through evaluation studies. In this way we hope to maximize project benefits for the relevant target groups and local communities.

The projects are monitored by project supervisors – a role taken on by the board members and other officials of the Knorr-Bremse Global Care organizations as well as employees of the Knorr-Bremse Group. The project supervisors oversee a project directly or use their professional expertise to support specific projects run by the partner NGO. In addition, employees have the opportunity to help local organizations as volunteers. Entrepreneurial project management and financial controls, combined with the partner organizations' experience and intensive personal supervision, are key factors ensuring the success and lasting impact of these partnerships for the beneficiaries.



The projects we support

Our funding areas

Knorr-Bremse Global Care focuses on three areas: education, WASH (water, sanitation and hygiene) and emergency relief. We are convinced that education is the key to a better future and should be a universal right. In 2020 we firmed up our goals and will in future be focusing on improved access to tertiary education. We regard initial training and professional development as important factors that contribute to improving people's prospects and help them assume greater responsibility for their lives. Our WASH projects are designed to help reduce morbidity and mortality rates associated with waterborne diseases. For this reason we are specifically committed to providing access to clean drinking water, improving the sanitation infrastructure and promoting hygiene measures. In individual cases, we support emergency relief measures following disasters.

Funding principles

Promoting the independence and individual responsibility of people in need and funding projects and programs that have a clear focus on results are two key objectives of Knorr-Bremse Global Care. This is the only way the organization can help bring about changes of structural relevance that have a broad impact on society, open up new prospects and achieve lasting results. All Knorr-Bremse Global Care's funding principles, application forms from the regional organizations and additional information on project selection can be found at www.global-care.eu

Our contribution to the Sustainable Development Goals

In September 2015, the United Nations adopted the Agenda 2030 for Sustainable Development, with 17 global Sustainable Development Goals (SDGs) and 169 targets. The SDGs are aimed at governments, businesses, organizations and every individual around the world. Goals for 2030 include, for example, promoting environmental and climate protection, combating hunger, and realizing equal opportunities in education. The global SDGs highlight the tremendous challenges facing humanity in the coming years, and at the same time provide orientation, showing the changes that must take place to preserve the world for future generations.

Like the Knorr-Bremse Group, Knorr-Bremse Global Care is determined to contribute to achieving the SDGs. In the light of the key focus areas of our work, we have a particular interest in two of the SDGs: SDG 4 "Quality education" and SDG 6 "Clean water and sanitation". The following pages present interesting information about selected Global Care projects that contributed to the Sustainable Development Goals and to our more targeted objectives in the areas of WASH and education in 2020.



SDG 4 – Commitment to quality education



SDG 4 aims to ensure inclusive and equitable access to quality education for all. Since 2020, Knorr-Bremse Global Care has been focusing its education work on improved access to tertiary education, including vocational preparation and careers advice. This creates the global conditions needed to reduce youth unemployment and ensure decent work, a self-determined life and greater resilience in crises. It is also important in view of the Covid-19 pandemic. The educational situation of over 500 million schoolchildren around the world has worsened because they do not have the technology to take part in online learning.¹



© Förderverein Stückchen Himmel e. V.

Goal



By 2030, the aim is to ensure that all girls and boys complete free, equitable and high-quality primary and secondary education leading to relevant and effective learning outcomes.

Global challenge



Nearly 20 percent of all school-age children worldwide are not enrolled in a primary or secondary school.² Six in ten children and young people enrolled in school do not achieve a minimum level of competence in reading and mathematics – equivalent to 617 million children worldwide.³

Our contribution



In 2020, Knorr-Bremse Global Care provided 245 schoolchildren with better access to high-quality primary and secondary education and helped them perform better at school.

1 | United Nations, Sustainable Development Goals Report 2020 (Data: 2020)
2 | United Nations, Sustainable Development Goals Report 2020 (Data: 2018)
3 | UIS.STAT, UNESCO Institute of Statistics 2019 (Data: 2017)

Goal



By 2030, the aim is to ensure that all girls and boys have access to high-quality early childhood development, care and pre-primary education so that they are ready for primary education.

Global challenge



Early childhood education is an effective tool for improving school performance and breaking down social inequalities. Nevertheless, more than 175 million children around the world do not have access to a kindergarten. This equates to nearly half of all children of pre-school age. In low-income countries, only one in five children are enrolled in a pre-school facility.⁴

Our contribution



In 2020, 2,450 children of pre-school age received high-quality early childhood education in pre-school facilities, thanks to Knorr-Bremse Global Care.

4 | A World Ready to Learn: Prioritizing quality early childhood education, UNICEF 2019



Goal

By 2030, the aim is to ensure equal access for all women and men to affordable and quality technical, vocational and tertiary education, including university.

Global challenge



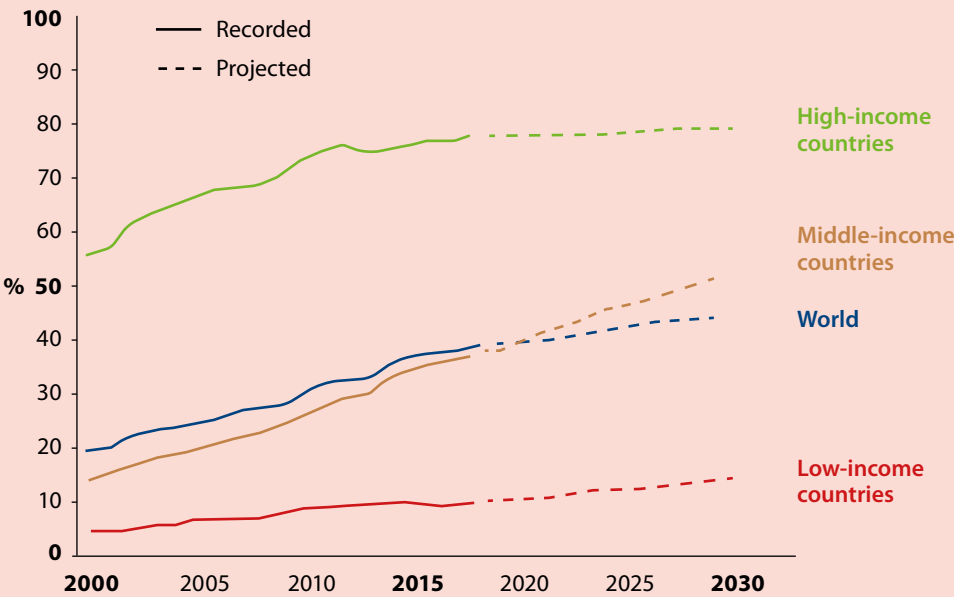
Global youth unemployment rose to more than 15% in 2020. This is nearly three times as high as the average global unemployment rate.⁵ Although people with tertiary education are more often in work and are more rarely affected by long-term unemployment,⁶ less than 39% of teenagers and young adults worldwide take a tertiary education course.⁷

Our contribution



In 2020, 258 young people were provided with access to high-quality, specialized training including careers advice, thanks to Knorr-Bremse Global Care.

Enrolment in tertiary education from 2000 to 2017 and projected figures to 2030⁸



Although the enrolment rate for training programs and universities has risen over the past two decades, there are still dramatic differences around the world: The tertiary enrolment rate ranges from 9% of all young people of the relevant age in low-income countries to 77% in high-income countries.

5 | World Bank Open Data, World Bank ILO Estimate 2020
6 | 9 | Education at a Glance 2019 – OECD Indicators, OECD 2019 (Data: 2018)
7 | 10 | UIS.STAT, UNESCO Institute of Statistics 2020 (Data: 2019)



Goal

By 2030, the aim is to substantially increase the number of youth and adults who have relevant skills, including technical and vocational skills, for employment, decent jobs and entrepreneurship.

Global challenge



Being able to use information and communications technology (ICT) is a skill that young people and adults need in the world of work. On average, however, only 5% of the world's young people and adults know how to write computer programs in a programming language. And less than 30% of young people and adults around the world have ever created a presentation using presentation software.⁹

Our contribution



521 young people obtained specialized or vocational qualifications and skills in 2020 to prepare them for the world of work and increase their chances of finding a job.



Goal

By 2030, the aim is to build and upgrade education facilities that are child-, disability- and gender-sensitive and provide safe, non-violent, inclusive and effective learning environments for all.

Global challenge



Nearly 30% of the world's children do not have basic facilities in terms of electricity, internet, computers, learning materials, drinking water and sanitation.¹⁰ Moreover, only 65% of primary schools worldwide have basic facilities for hand washing – an essential measure for preventing Covid-19.¹¹

Our contribution



1,907 children were provided with access to a safer, more appropriate learning environment thanks to improved infrastructure. In addition, as part of the Covid-19 relief program, over 10,000 children and young people were provided with access to technical equipment and the Internet so that they could take part in online classes.

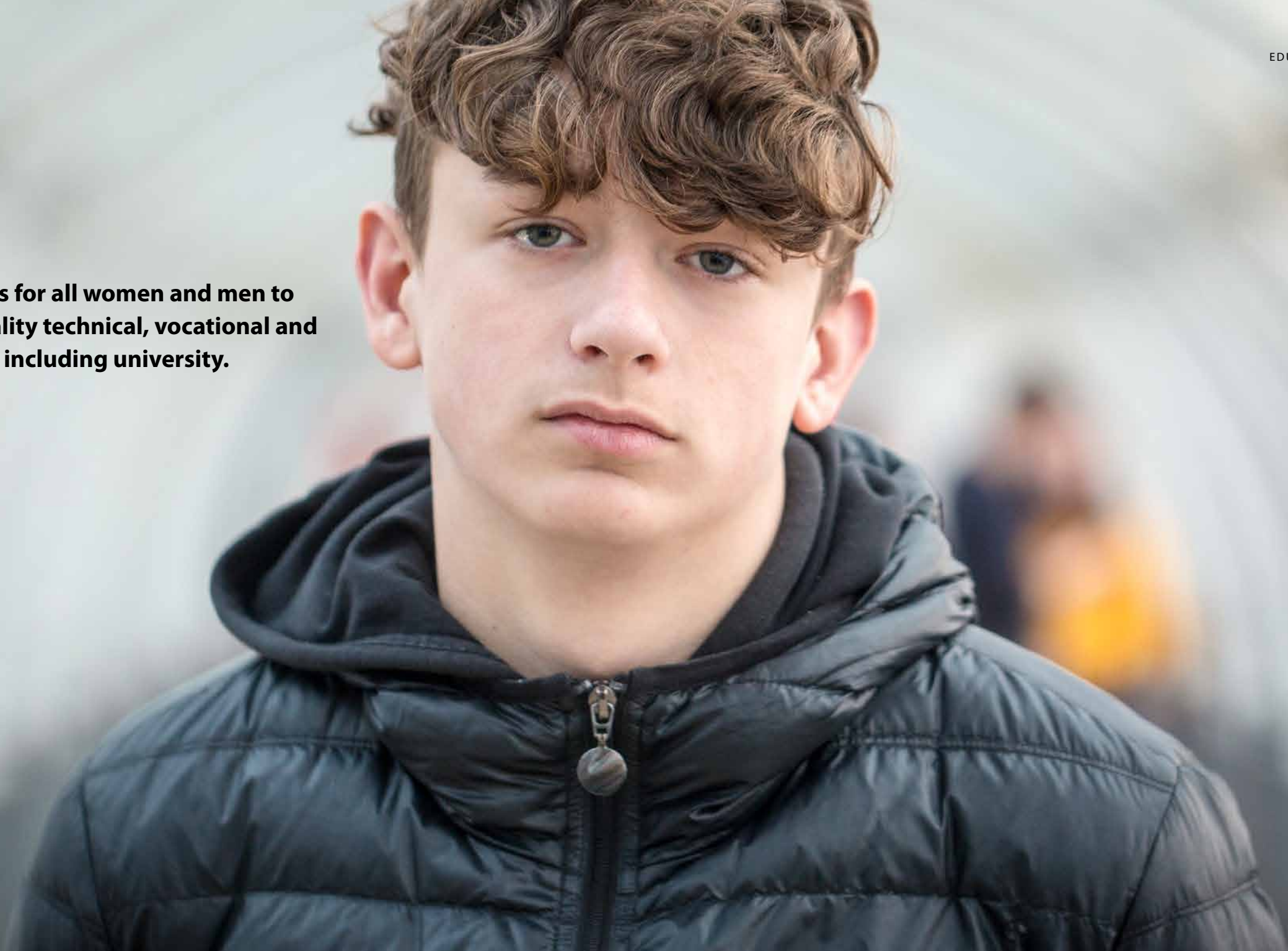
8 | Global Education Monitoring Report, UNESCO Institute for Statistics (UIS) 2019
11 | United Nations, Sustainable Development Goals Report 2020 (Data: 2020)

TARGET4.3



EQUAL ACCESS TO AFFORDABLE TECHNICAL, VOCATIONAL AND HIGHER EDUCATION

Ensure equal access for all women and men to affordable and quality technical, vocational and tertiary education, including university.




© Getty Images

Global challenge




Only 38% of young people complete vocational training or a university course.¹²

Local challenge



With a youth unemployment rate of around 15%, Ukraine is in line with the global average.¹³ However, social inequality in the education system is high, particularly in terms of access to tertiary education. Family background plays a key role here. Whereas 87% of young people from families in the top quarter for income complete tertiary education, in the bottom quarter of families this figure falls to just 31%.¹⁴

Local challenge



Apart from social inequalities, there are also regional disparities. Young people from underdeveloped areas of Ukraine often lack financial resources and are forced to leave school and start work at a young age. The number of young people who complete tertiary education is nearly 30% lower in rural areas of Ukraine than in urban areas. This means that young people in rural areas are less likely to have good future prospects.¹⁵

12 | 13 | World Bank Open Data, World Bank 2021 (Data: 2019)
14 | 15 | World Inequality Database on Education, UNESCO 2021 (Data: 2012)

TARGET4.3



EQUAL ACCESS TO AFFORDABLE TECHNICAL, VOCATIONAL AND HIGHER EDUCATION



Our contribution to equal access to specialized training

The education gap for disadvantaged young people in Ukraine is particularly evident at tertiary level. The opportunities people are born with have a significant influence on whether they will start a promising career or remain trapped on the other side of the social divide. Poorer families frequently take their children out of school early because of difficult family situations or a lack of money, and send them to work without any training. As a result, these young people have much reduced development and income prospects on the job market.

In Lviv, the Salesians of Don Bosco are disrupting this cycle. With the help of Knorr-Bremse Global Care, they are providing high-quality, market-oriented training in vehicle mechanics to orphans and young people from disadvantaged socio-economic groups. The training program was drawn up on the basis of current market needs as identified in close consultation with people in industry. It means the young people are ideally placed for later employment and a self-determined life far removed from social disadvantage.

Well trained and off to a good start

Project location	Lviv, Ukraine
Target group	87 socially disadvantaged young people
Level of funding	EUR 153,000
Partner organization	Don Bosco Mondo e. V.
On-site coordination	Salesians of Don Bosco
Duration	September 2019 – June 2020



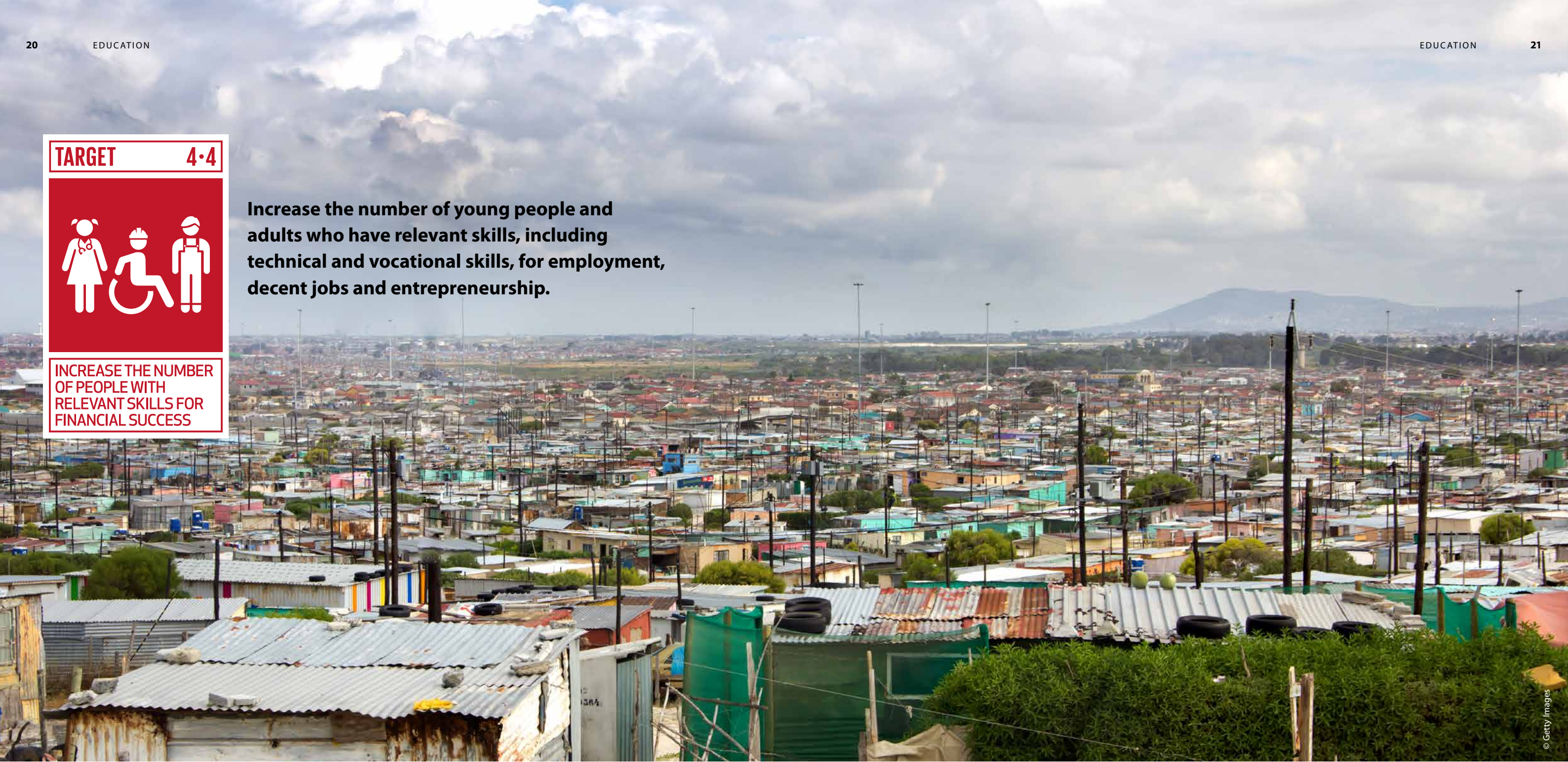
© Don Bosco Mondo e. V.

TARGET4•4




INCREASE THE NUMBER OF PEOPLE WITH RELEVANT SKILLS FOR FINANCIAL SUCCESS

Increase the number of young people and adults who have relevant skills, including technical and vocational skills, for employment, decent jobs and entrepreneurship.




© Getty Images

Global challenge




Young people and adults need to know how to use information and communications technology (ICT) in the world of work. Demand for IT experts is high, but only 5% of the world’s young people and adults know how to write computer programs in a programming language.¹⁶

Regional / local challenge




With a **youth unemployment rate of nearly 60%**¹⁷ and with 76% of young people and young adults not doing a vocational training program or a degree,¹⁸ South Africa is in a significantly worse position than the global average.

Local challenge



In 2020, 31.9% of the 10.3 million or so 15- to 24-year-olds in South Africa were not in employment, education or training (NEET). **This means that around 3.3 million young people and young adults are excluded from the job market and are not in a position to improve their skills through further education and training.**¹⁹

Local challenge



High youth unemployment in the townships is an urgent socio-economic problem that has been affecting South Africa for years. **The unemployment²⁰ and NEET²¹ rates are higher among girls and young women than among their male peers.**

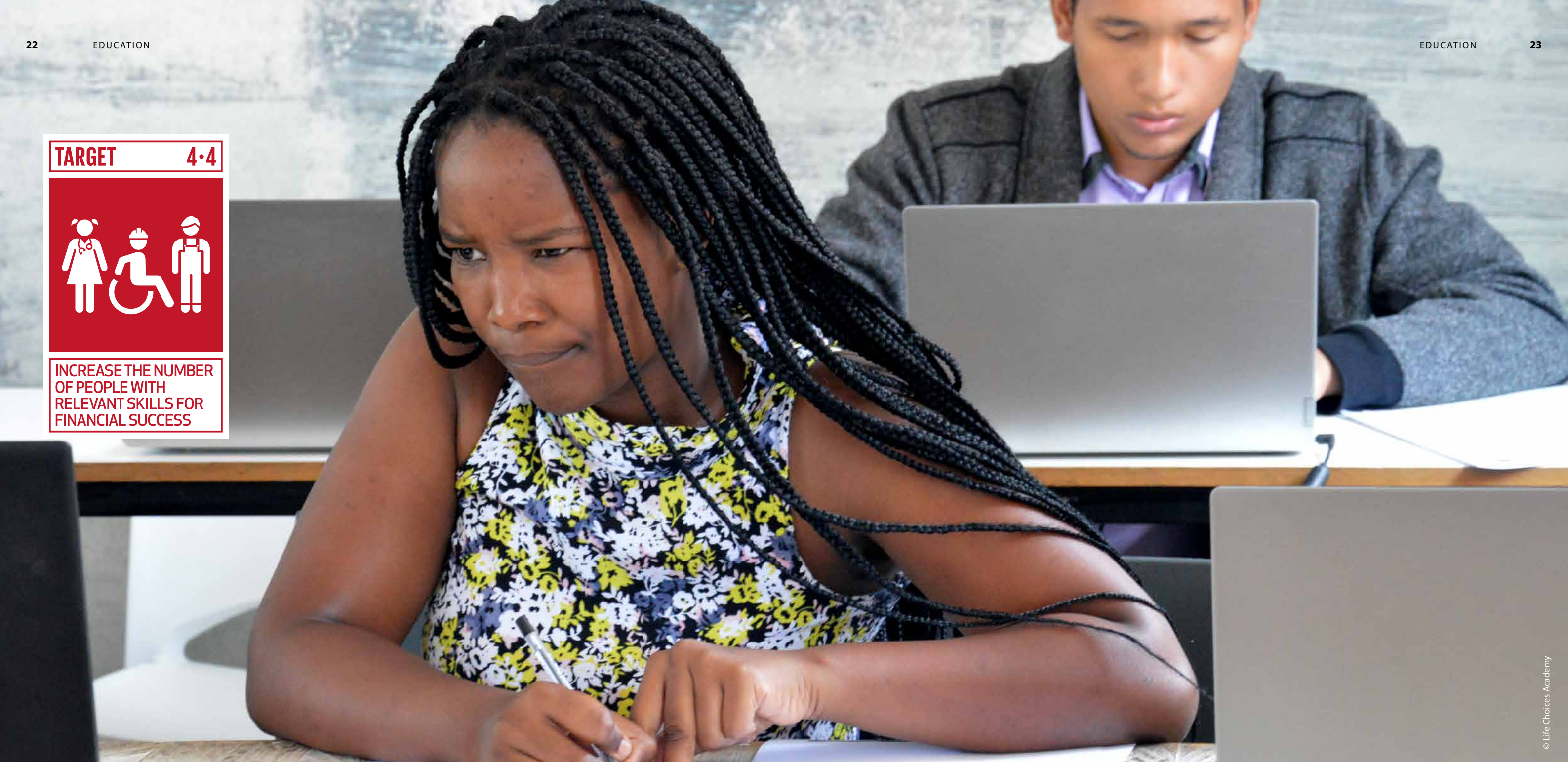
16 | Education at a Glance 2019 – OECD Indicators, OECD 2019 (Data: 2018)
17 | 20 | World Bank Open Data, World Bank 2021 (Data: 2019)
18 | UIS.STAT, UNESCO Institute of Statistics 2021 (Data: 2018)

19 | 21 | Quarterly Labour Force Survey – 3rd Quarter 2020, Statistics South Africa 2021 (Data: 2020)

TARGET 4.4



INCREASE THE NUMBER OF PEOPLE WITH RELEVANT SKILLS FOR FINANCIAL SUCCESS



© Life Choices Academy


Our contribution to facilitating access to specialized and vocational training

Most young people from the Cape Flats in Cape Town cannot afford vocational training or a university education. Moreover, many young people in South Africa leave high school without school or vocational qualifications that would enable them to find employment. Consequently, youth unemployment is high. In addition, the high schools are not flexible enough to respond to the needs of industry, and as a result the skills gap is widening and unemployment remains high.

In order to close the gap, the Life Choices Academy offers an innovative model that trains young people for

employment in high-demand sectors. Knorr-Bremse Global Care supports the organization's IT training courses, teaches relevant soft skills and life skills and offers internships. The training courses are closely aligned with the growing demand in the IT industry, a sector that offers plenty of prospects, so the young people are excellently prepared for the job market. This considerably improves their chances of employment and of playing a role in society. The impact is already visible: 75% of participants are now in stable, well-paid jobs.

Programmed for career success

Project location	Cape Town, South Africa
Target group	240 socially disadvantaged young people
 Level of funding	EUR 119,000
Partner organization	Salesian Life Choices
Duration	July 2019 – June 2021



SDG 6 – Commitment to clean water and sanitation



SDG 6 seeks to ensure safe drinking water and appropriate of sanitation for all. The focus is on sustainable and efficient water management and on strengthening community responsibility for it.

Knorr-Bremse Global Care supports projects in the area of water, sanitation and hygiene. Clean, safe drinking water and hygiene training protect communities against disease and increase life expectancy. This provides the basis for participation in public life, whether in school, training or employment. Our aim is to lower the rates of mortality and illness linked to water-related diseases. During a pandemic especially, hygiene measures and hand-washing facilities are more important than ever.



Goal

By 2030, the aim is to achieve universal and equitable access to safe and affordable drinking water for all.

Global challenge



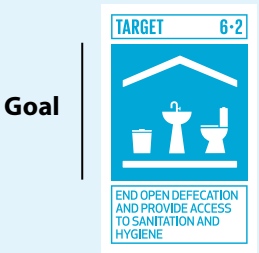
Although drinking water is essential to life, 2.2 billion people around the world do not have access to clean water. 785 million people even live without a basic supply of drinking water.²²

Our contribution



In 2020, Knorr-Bremse Global Care gave 8,609 people around the world access to fresh, clean drinking water.

22 | 23 | Joint Monitoring Programme for Water Supply, Sanitation and Hygiene (JMP), WHO/UNICEF 2019 (Data: 2017)



Goal

By 2030, achieve access to adequate and equitable sanitation and hygiene for all and end open defecation, paying special attention to the needs of women and girls and those in vulnerable situations.

Global challenge



Although sanitation has improved considerably worldwide in the past two decades, nearly 60% of people still lack access to adequate, properly installed sanitation. Nearly 40% of people worldwide do not have the basic hand-washing facilities that were particularly important in 2020 to prevent the spread of Covid-19.²³

Our contribution



Thanks to Knorr-Bremse Global Care's support last year, 4,281 people around the world obtained access to properly installed, adequate sanitary and hand-washing facilities.



Goal

Support and strengthen the participation of local communities in improving water management and sanitation.

Global challenge



It is only by involving local communities in water and sanitation management that WASH initiatives can achieve lasting success. Participation by local communities around the world is currently still at a moderate to low level.²⁴

Our contribution



A total of 1,229 members of various communities were directly involved in WASH projects through training courses, engagement or employment, strengthening local responsibility for the long term.

24 | SDG 6 Data Portal, UN-Water 2019 (Data: 2017)

TARGET6·1



SAFE AND AFFORDABLE DRINKING WATER

Access to safe and affordable drinking water



© Getty Images

Global challenge



2.2 billion people worldwide do not have access to clean water. 785 million people live without even a basic supply of drinking water.²⁵

Local challenge



20 percent of the 785 million people around the world who do not have basic access to clean drinking water live in Central and South Asia.²⁶

Local challenge



Availability of adequate supplies of drinking water has improved in India in recent decades. **Nevertheless, nearly 98 million people in India still do not have basic access to drinking water.** The same is true of 33% of schools in rural India. As a result, girls and women have to walk long distances to carry drinking water to the schools.²⁷

25 | 26 | 27 | Joint Monitoring Programme for Water Supply, Sanitation and Hygiene (JMP), WHO/UNICEF 2019 (Data: 2017)



TARGET 6·1

SAFE AND AFFORDABLE DRINKING WATER


Our contribution to clean drinking water

The lack of access to fresh water has particularly negative consequences in India's rural schools. Contaminated water carries avoidable diseases and reduces people's quality of life. Schools without clean fresh water are not a safe learning environment for children, who cannot develop their full potential. In addition, girls have to spend time and energy carrying water to school, and this can have a negative impact on learning outcomes.

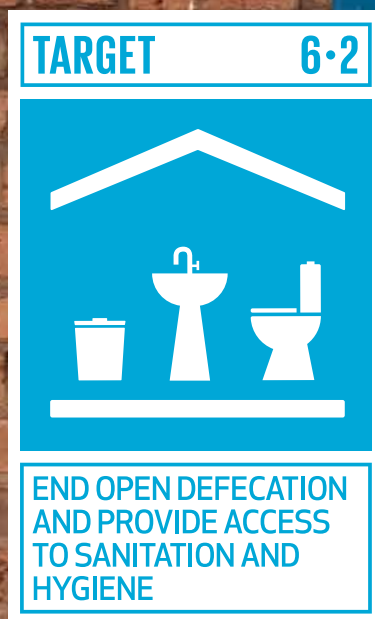
Improvements that address all aspects of this problem are being made by an organization called Work for Equality. The long-term development project for the school

involves the provision of clean drinking water and equitable sanitary infrastructure. Knorr-Bremse Global Care Asia Pacific and employees from two Group sites in India – Knorr-Bremse TCI and Knorr-Bremse CVS – are supporting this project through a Local Care partnership. This means the project benefits from a broad range of expertise as well as financial support. Long-term personal contacts also ensure that the project is sustainable. Developing the school in turn improves the living conditions not only of the children and teachers, but also of the families and the entire community living around the facility.

Fresh water boosts learning success

Project location	Methalwadi Village, Pune, India
Target group	256 schoolchildren and teachers at Sahyadri Vidyalaya School
 Level of funding	EUR 39,000
Partner organization	Work for Equality
Duration	November 2020 – June 2021





Access to
adequate and
equitable
sanitation
and hygiene

**Global
challenge**



4.3 billion people have no access to adequate sanitation – that is nearly two-thirds of the world's population.²⁸

**Regional
challenge**



While sanitation is generally improving worldwide, the situation in Sub-Saharan Africa is still precarious. **82% of people in Africa lack adequate sanitary facilities, and 75% do not have basic hand-washing facilities – a particular problem during the Covid-19 pandemic.²⁹**

**Local
challenge**



In Kenya, the sanitation situation has not improved over the years. On the contrary, over 73% of people living in rural areas do not have access to basic sanitary facilities. **More than 37 million people in Kenya do not have basic hand-washing facilities at home.³⁰**

²⁸ | "United Nations World Water Development Report 2019", UNESCO 2019 (Data: 2015)

²⁹ | 30 | Joint Monitoring Programme for Water Supply, Sanitation and Hygiene (JMP), WHO/UNICEF 2019 (Data: 2017)

TARGET6•2



END OPEN DEFEICATION AND PROVIDE ACCESS TO SANITATION AND HYGIENE



© World Vision

Our contribution to providing adequate sanitation

There are plans for a wide range of different measures to stem or stop the Covid-19 pandemic in Kenya. The aim of the partnership between Knorr-Bremse Global Care and World Vision is to equip local people quickly, sustainably and above all effectively to deal with the direct and indirect impacts of the pandemic. The focus is on strengthening the local health care system, supporting children, improving food security and protecting livelihoods. In addition, there are plans to implement long-term preventive measures to restrict the spread of diseases in general.

In Kitui County and Makueni County, steps were taken to improve hygiene in some communities through increased hygiene awareness and WASH infrastructure. As well as renovating four water sources to provide access to clean water, the project installed twenty hand-washing stations and ran hygiene classes. The main beneficiaries were a hospital, seven smaller health centers, a police station and several schools. A group of volunteers ensures that the facilities work properly and sufficient soap is provided.

Hygiene practices protect health

Project location	Kitui County and Makueni County, Kenya
Target group	3,000 rural families
Level of funding	EUR 150,000
Partner organization	World Vision Deutschland e.V.
On-site coordination	World Vision Kenya
Duration	June 2020 – January 2021



Our contribution to social entrepreneurship

As an organization financed by a corporate group, it is natural for Knorr-Bremse Global Care to use entrepreneurial approaches to tackle global social challenges. We support education programs that develop entrepreneurial skills in young people and we are actively engaged in funding opportunities for social enterprises.

Global Care supports effective entrepreneurs and their ideas, enabling them to grow their business models and to provide real added value for the community in terms of their social impact. In the medium term, the enterprises develop into successful businesses, financing themselves and creating jobs. Knorr-Bremse Global Care does not expect financial returns; these are purely philanthropic investments.

We have been working with Yunus Social Business (YSB) since 2019. Founded by Nobel laureate Muhammed Yunus in 2011, YSB's aim is to fight poverty by creating profitable social businesses. Philanthropic capital is converted into loans and consultancy services and selected social enterprises receive advice and support and are developed further. As a result of our donation, YSB has so far been able to support three social enterprises. Last year we decided to build on our partnership with YSB and to support further promising social entrepreneurs.

One of the projects that have already received support is ClearPath Coffee in Colombia. This social enterprise is a sales partner for small-scale Colombian farmers who grow high-quality specialty coffee. It offers the coffee producers fair prices and creates direct links to buyers. In doing so, the business supports sustainable, socially responsible coffee production in Colombia. In addition, training courses on improved cultivation and harvesting methods, on reinvestment and on better market development support the farmers' economic growth. The project stabilizes the livelihoods and food security of over 400 small-scale farmers and their families.

Call for proposals for sustainable growth

To promote social entrepreneurship, we have also extended our partnership with the Siemens Foundation. Building on the "Empowering People. Award" in 2018, the foundation launched another call for proposals for social start-ups in 2020. This one, called "Growth for sustainable impact", invites businesses that tackle social problems with low-tech solutions to apply for support. Knorr-Bremse Global Care is helping with funding for the five winners and providing project support. WASHKing from Ghana, for example, provides low-income and underserved communities with access to environmentally friendly sanitation products at an affordable price. They are built by local tradesmen using local materials and are also operated through franchise models. The WASHKing toilet is perfect for improving sanitation in poorer urban communities because the technology is easy to maintain, and the sewage is treated on site with no need for pipes. The business model creates job opportunities and provides dignified sanitation solutions.



Emergency relief activities

Knorr-Bremse Global Care supports emergency relief projects in the wake of natural disasters and armed conflicts. This helps people who have lost everything – directly and with minimum bureaucracy. In order to prevent humanitarian disasters, the victims need to receive drinking water, hygiene products, food and medical care as quickly as possible. They often have to be housed in emergency accommodation and this situation can last for some time. Emergency relief following the 2004 tsunami was what led to the establishment of Knorr-Bremse Global Care, and it remains one of the organization's three pillars of activity.

The global Covid-19 pandemic and lockdown

Covid-19 spread across the world in just a few months in early 2020. By the end of the year, it had infected over 79 million people globally.³¹ The impacts of the pandemic are particularly severe for those in groups that were already classed as vulnerable before the crisis.

Corona, loss of income and hunger

The World Food Program predicts that an additional 130 million people could be at risk of starvation because of the economic downturn caused by the pandemic. This means a total of 265 million people could be severely malnourished.³²

Sri Lanka is one of the countries affected. Over 40,000 people were infected with the virus there in 2020 and 187 people died.³³ Although the country has the pandemic reasonably well under control, the rural population is suffering severely from a lack of income as a result of lockdown. Even before the pandemic, incomes in rural parts of Sri Lanka were half the national average³⁴ and malnutrition was 17% higher than average.³⁵

Knorr-Bremse Global Care's Covid-19 rescue fund

In 2020, Knorr-Bremse Global Care invested over EUR 700,000 in measures to reduce the impacts of the Covid-19 pandemic, reaching nearly 90,000 people worldwide.

Our contribution

- A total of 56,000 people received food or food vouchers to prevent starvation
- 30,000 people around the world were informed about and trained in hygiene measures
- 10,000 children and young people were equipped with devices and internet access to enable them to take part in online lessons
- 14,000 people received health support and hygiene kits

31 | Weekly epidemiological update – 29 December 2020, WHO 2020

32 | WFP Chief warns of hunger pandemic as COVID-19 spreads, WFP 2020

33 | COVID-19 Weekly Epidemiological Update, WHO 2020

34 | Department of Census and Statistics, Ministry of National Policies and Economic Affairs, Sri Lanka 2016

35 | Ministry of Health, Nutrition and Indigenous Medicine, Sri Lanka 2016



© CARE/Chrysalis

Our contribution to emergency relief during the pandemic

The Covid-19 pandemic had a serious impact on the women who pick tea on the plantations in Sri Lanka: Difficult working conditions caused by the monsoon season in April 2020, lockdown restrictions and lower wages because of falling prices on the global market made it harder for the women to secure enough to eat. During lockdown, unemployed day laborers returned from the cities to their families in the countryside, which meant the women were often the sole breadwinners for a suddenly increasing number of family members.

Knorr-Bremse Global Care had already supported the plantation workers through a WASH project in 2019 and continued to stand by them during this challenging time. In 2019, funds from Knorr-Bremse Global Care were used to provide access to drinking water and adequate latrines in rural communities, improving the quality of life and health of the people living there. To counteract the emerging starvation crisis caused by the pandemic in 2020, Knorr-Bremse Global Care assisted partner organizations Chrysalis and CARE Deutschland with the provision of food parcels, helping to feed over 9,000 families during the crisis.

Food aid during the pandemic	
Project location	Uva and Central Province, Sri Lanka
Target group	Over 30,000 villagers from a 2019 WASH project
Level of funding	EUR 51,000
Partner organization	CARE Deutschland e. V.
On-site coordination	Chrysalis
Duration	May 2020 – October 2020



Results 2020

In 2020, Knorr-Bremse Global Care supported 89 projects with a total funding volume of EUR 1.72 million.³⁶ The projects reached 110,548 people.

These are consolidated results from the activities of the three Global Care organizations:

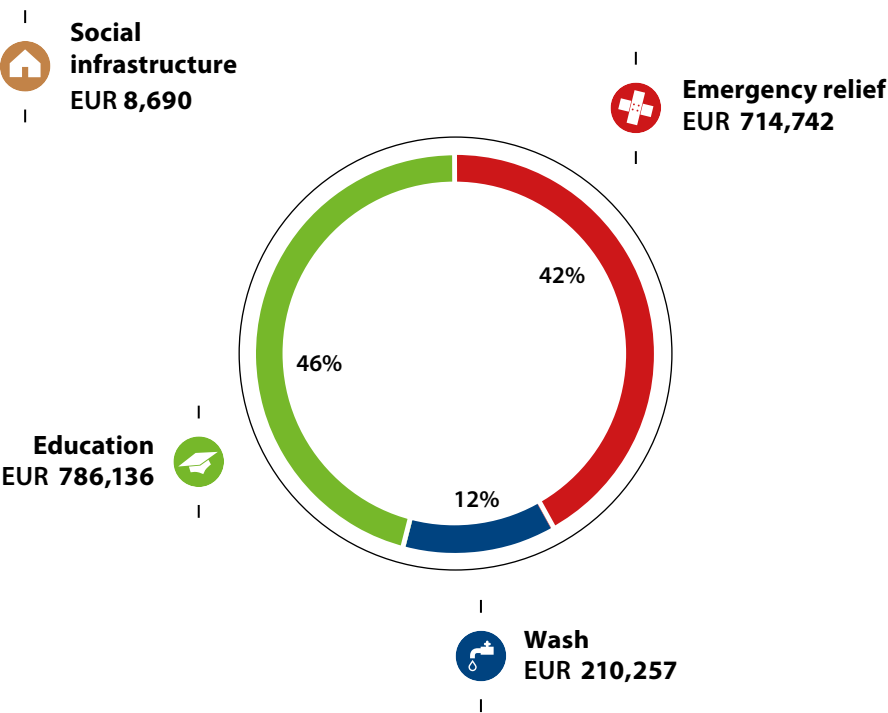
The Global Care organization in Europe supported 62 projects with a total funding volume of EUR 1.15 million. The projects reached 87,118 people.

Knorr-Bremse Global Care North America Inc. supported 17 projects to the tune of EUR 383,000. The projects benefited some 10,469 people.

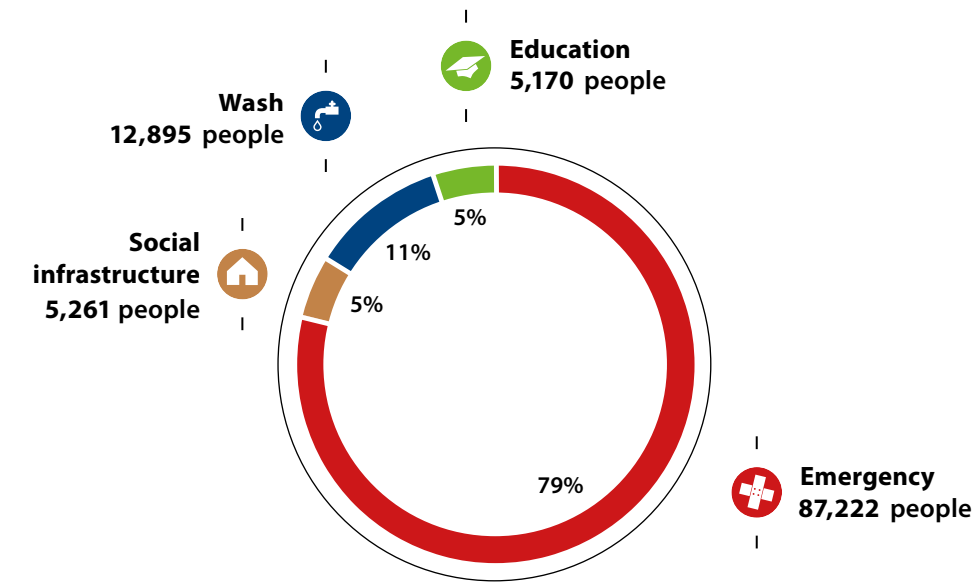
In Asia, Knorr-Bremse Global Care Asia Pacific Ltd. supported ten projects with funding totaling EUR 184,000. These projects benefited 12,961 people in 2020.

The following analyses are based on the consolidated project funding amounts³⁷ and the number of beneficiaries worldwide.

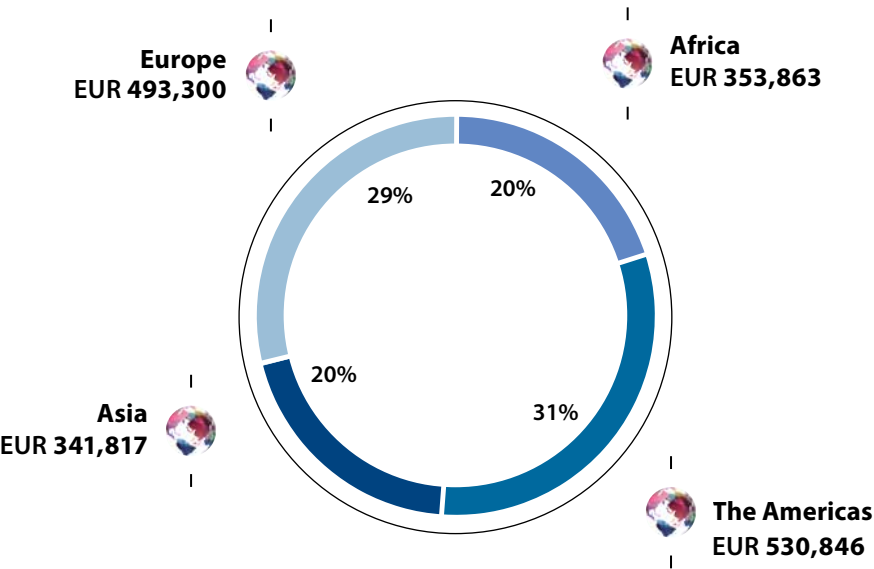
Expenditure by project type



Number of beneficiaries by project type



Expenditure by region³⁸



36 | 37 | Pure project funding without administrative or other costs

38 | These figures represent the total project funding expenditure of all three Knorr-Bremse Global Care organizations

Thank you!

Once again we would like to finish by thanking all those who made it possible for us to carry out our charitable work successfully in 2020. Without the constant support of all Knorr-Bremse employees and the commercial success of the Company, it would not be possible for the Knorr-Bremse Global Care organizations in Europe, Asia and North America to exist.

The superb support and commitment of Knorr-Bremse employees and their determination to get involved in our project work make Knorr-Bremse Global Care what it is today.

In particular, we would like to thank our donors from the Knorr-Bremse Group worldwide: Knorr-Bremse AG, Knorr-Bremse Systeme für Schienenfahrzeuge GmbH, Knorr-Bremse Systeme für Nutzfahrzeuge GmbH, Knorr-Bremse Asia Pacific (Holding) Limited and Knorr Brake Holding Corporation.

We also wish to thank all our individual donors, friends and sponsors. Their interest, commitment and trust help us to continue pursuing the aims of Knorr-Bremse Global Care and the global Sustainable Development Goals and to face the enormous challenges of the future together.

The following is a list of our project partners in 2020, to whom we also extend our thanks for the successful implementation of the projects we supported.



African Sand Dam Foundation (ASDF)
AKA – Aktiv für interKulturellen Austausch e. V.
Amandla gGmbH, Amandla Ku Lutsha
Amara Foundation
arche noVa e. V.
Ashoka Deutschland

Bellevue di Monaco eG
Bendix Commercial Vehicle Systems LLC
Bendix Foundation
Boys and Girls Club
Boys Hope Girls Hope
Breakthrough Schools
Bunte Münchner Kindl

CARE Deutschland e. V.
Carpe Diem e. V.
Center for Arts-Inspired Learning
CEval GmbH
Children's Home of Jefferson County
Chrysalis
Condrobs e. V.

Dein München gGmbH
Deutsche Welthungerhilfe e. V.
Deutsches Rotes Kreuz, Cruz Roja Peruana
Die Arche – Christliches Kinder- und Jugendwerk e. V.

Domestic Violence & Child Advocacy Center
Don Bosco Mondo e. V.
DYWOSWIT

Esperanza Inc.
Evangelisches Stadtdekanat Frankfurt am Main

Förderverein Stückchen Himmel e. V.
Frauenhilfe München gGmbH

German Toilet Organization e. V.
GO Foundation
Grenzkultur gGmbH
Grundschule an der Hanselmannschule

Instituto Anchieta Grajaú
Interplast Germany e. V.

Knorr Brake Company
Knorr-Bremse Global Care Asia Pacific Ltd.
Knorr-Bremse Global Care Brasil
Knorr-Bremse Global Care North America Inc.
KURIER Aid Austria

Lichtblick Hasenberg

Masifunde Bildungsförderung e. V.
Metrum Berlin gGmbH
MiBiKids e. V.
Missao Cantinho do Céu Aracaju-SE
Motogo
Münchner Freiwillige – Wir helfen e. V.

Norwegian Church Aid

Phoenix Theatre Inc of Bowling Green
Presbyterian Agricultural Services and Child Development

Salesian Life Choices Institute
Save Our Children (SOC)
Save the Children Hong Kong, Save the Children India
SENAI Brazil
Siemens Stiftung
St Ignatius Welsh Academy
Stiftung Kinderzukunft

Thüringisch-Kambodschanische Gesellschaft/COMPED
Tumelo Home

Über den Tellerrand kochen e. V.
Urban Community School
Urban Mission

Water & Sanitation for the Urban Poor (WSUP)
Watertown City School District
Watertown Family YMCA
Work for Equality Ltd.
World Vision Deutschland e. V., World Vision Kenya

Yunus Social Business

Imprint

Published by:

Knorr-Bremse Global Care e. V.
Moosacher Str. 80
80809 Munich
Germany

Responsible under German press law:

Julia Thiele-Schürhoff, Knorr-Bremse Global Care e. V.

Concept:

Anna Samhammer, Knorr-Bremse Global Care e. V.

Editors:

Anna Samhammer, Knorr-Bremse Global Care e. V.
Sylvia Bytow-Weissheimer, Knorr-Bremse Global Care e. V.
Karen Caesar, Knorr-Bremse Global Care e. V.
Ingo Woelk

Layout design

Anna Lilakewitsch, KB Media GmbH

Photography and image copyright

THE GLOBAL GOALS for Sustainable
Development, Project Everyone
(SDG icons)
Laura Klapper (cover image, right side),
© Masifunde Bildungsförderung e. V.
Prabha Vilas Jadhav (cover image, left side),
© Work For Equality

Printing

Weber Offset, Munich
Paper: Enviro Clever



