

DRIVING CHANGE

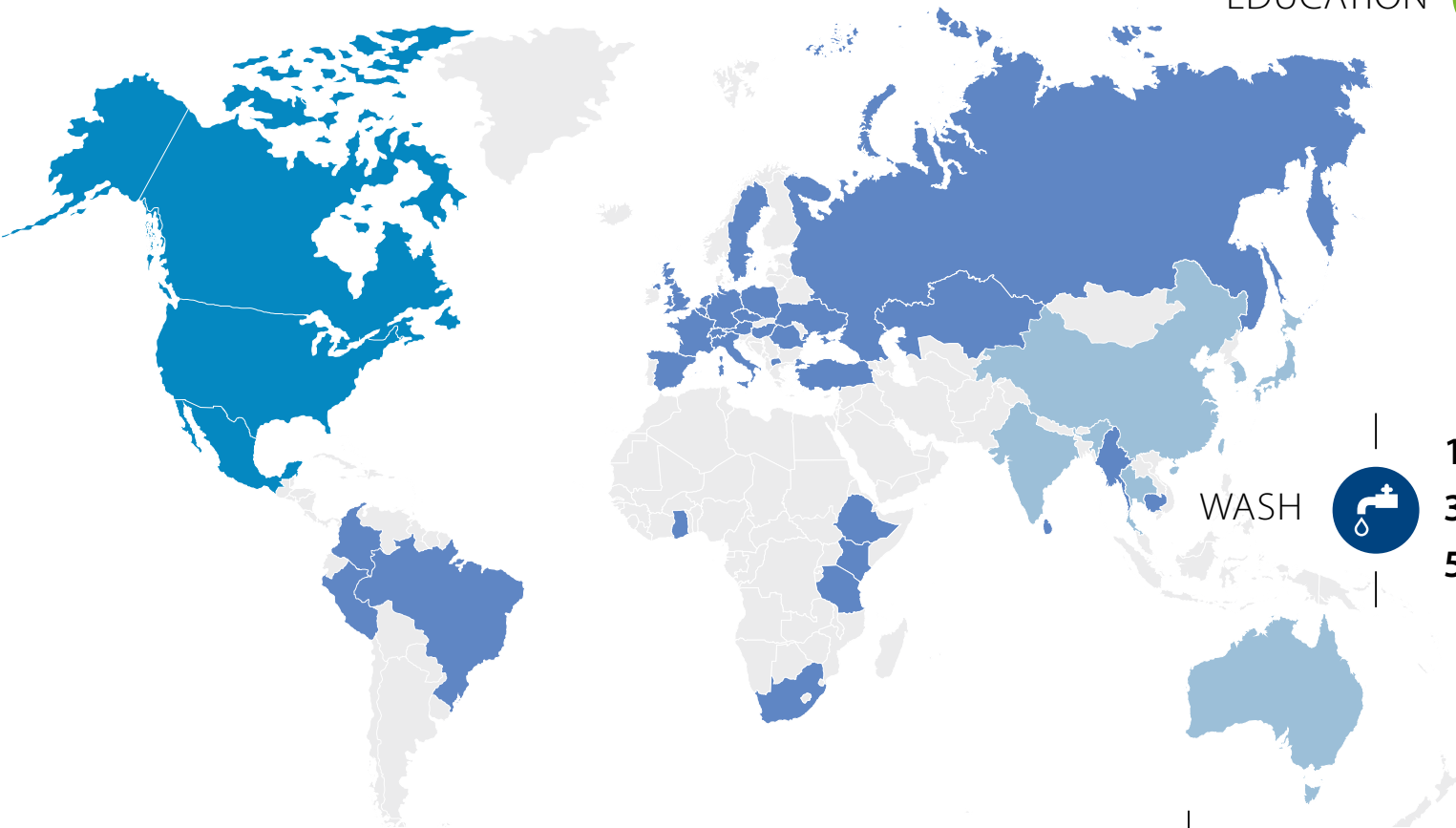


FOREWORD	3
THE YEAR 2019	4
WHO WE ARE	6
HOW WE WORK	10
COMMITMENT TO SDG 4	12
SDG TARGET 4.1:	
Challenge:	
Minimum required educational competence	16
Our contribution to quality basic education	18
SDG TARGET 4.3:	
Challenge:	
Youth unemployment and access to education	20
Our contribution to equal access to technical education	22
COMMITMENT TO SDG 6	24
SDG TARGET 6.1:	
Challenge: Safe drinking water	26
Our contribution to safe drinking water	28
SDG TARGET 6.2:	
Challenge: Appropriate sanitation	30
Our contribution to appropriate sanitation	32
PROMOTING SOCIAL ENTREPRENEURSHIP	34
COMMITMENT TO EMERGENCY RELIEF	36
Our contribution to emergency relief following the cyclone	38
EVALUATION 2019	40
THANK YOU!	42



PROJECT FUNDING WORLDWIDE 2019

**53,673 people benefitted
from 66 projects at a funding
volume of 1.743 million EUR**



EDUCATION



**42 funded projects
3,586 beneficiaries
985,423 EUR expenditure**

WASH



**13 funded projects
33,117 beneficiaries
598,466 EUR expenditure**

SOCIAL INFRASTRUCTURE



**9 funded projects
470 beneficiaries
109,209 EUR expenditure**

EMERGENCY RELIEF



**2 funded projects
16,500 beneficiaries
50,000 EUR expenditure**

- Knorr-Bremse Global Care e.V.
- Knorr-Bremse Global Care North America Inc.
- Knorr-Bremse Global Care Asia Pacific Ltd.

DEAR READERS,

2019 was an important and successful reporting year for Knorr-Bremse Global Care. We continued to pursue our strategic approach with single-minded ambition, first by focusing our funding projects on the Sustainable Development Goals of the United Nations, and second by concentrating on the issues of education and WASH (water, sanitation and hygiene). We also reached a milestone: The Knorr-Bremse Global Care organization now has a global structure, with three non-profit organizations in the Asia Pacific, European and North American regions.

Figures for the year 2019 document the scope of our work: We were able to help 53,673 people improve their life prospects by funding 66 projects worldwide with a total of 1.743 million euros. These achievements were made possible through generous donations from the different Knorr-Bremse Group companies in Europe, the USA and Hong Kong.

Knorr-Bremse Global Care gained clout during this reporting year. We successfully completed establishment of the two non-profit organizations Knorr-Bremse Global Care Asia Pacific Ltd. in Hong Kong and Knorr-Bremse Global Care North America Inc. in the USA. They are able to select and fund projects independently, but are united in their focus on improving the living situation for needy people by supporting education and WASH programs. Equipped with this structure, in the future we plan to achieve even more impact. At the same time, we want to give more Knorr-Bremse employees – from São Paulo to Munich to Shanghai – the opportunity to become actively involved.

We want to constantly keep improving. Our work focuses on the United Nations Sustainable Development Goals (SDGs), which motivate us to continuously develop our own approaches, methods and processes. Our work focuses on SDG 4 “Quality Education” and SDG 6 “Clean Water and Sanitation.” Because of this, in 2020 we will be developing concrete goals for the education and WASH areas. To ensure our funding activities are as efficient as possible, we need to be transparent about how much we contribute and what impact these funds have. To do so, we are using more systematic reporting and more thorough project analysis.

2020 is an anniversary year for the association in Germany. Knorr-Bremse Global Care e.V. has been improving living circumstances for needy people worldwide for 15 years. This also remains our goal for the next decade. We plan to achieve it through our joint efforts with all Knorr-Bremse Global Care organizations, with Knorr-Bremse employees worldwide and with our partners. For our company, using the funds entrusted to us efficiently and effectively is just as important as focusing on high-impact funding.

I wish you exciting and informative insights as you read the Knorr-Bremse Global Care Annual Report.

Warm regards,

Julia Thiele-Schürhoff
Chairperson of the Executive Board of
Knorr-Bremse Global Care e.V.



THE YEAR 2019

MARCH

LIFELONG LEARNING



Project visit to Jharkhand, India

Martyn Perkins from Knorr-Bremse Global Care Asia Pacific Ltd. visited a project by Welthungerhilfe in Jharkhand. In addition to constructing new sanitation facilities, the project also involves teaching schoolchildren and their mothers about healthy nutrition. Martyn gained important insight into the work being done locally, and even learned a little Hindi.

APRIL

TALKING ABOUT IT



Presentation of the Palliative Medicine Foundation

In April 2019, Dr. Claudia Bausewein, Clinic Director at the Munich Clinic for Palliative Medicine, gave a presentation on the topic of "death and dignity" at Knorr-Bremse in Munich. Employees at the site voted for a donation of 25,000 euros to the foundation as part of a Christmas fund-raising campaign. Thomas Steiner from Knorr-Bremse Global Care e.V. delivered the check.

MAY

SUPPORTING PARTNERS



Organizational development

Continuation of our close collaboration with the Instituto Anchieta Grajaú in São Paulo led to an intensive, one-month consultation with Knorr-Bremse Global Care e.V. and the organization in Brazil. The result: Fund-raising capacities were reinforced, and we developed a long-term strategic plan, with the goal of setting up the Instituto to be independent in the long-term.

JUNE

SHOWING COMMITMENT



Award ceremony for the "Toiletten machen Schule" competition

In 2018, students and teachers across Germany were invited to submit their ideas on long-term maintenance for school toilets. The best idea was honored in Berlin in 2019 – and won a school's sanitation renovation as the grand prize. Knorr-Bremse Global Care e.V. was the main funder for the competition, designed by the German Toilet Organization, and Eva Seifert handed over the prize to the proud winners of the Arnulfschule in Saarbrücken.

JULY

SHOOTING A FEW HOOPS



Shirtball Challenge at Knorr-Bremse Day 2019

Employees sank a total of 334 baskets at KB Day 2019 in Munich during the Shirtball Challenge staged by Right to Play. KBGC donated 15 euros for each hit – a grand total of 5,010 euros by the end of the day. Knorr-Bremse Global Care e.V. doubled this amount to 10,020 euros. This will allow Right to Play in Ghana to train 50 teachers in "play-based learning" and improve educational quality there.

JULY

AWARDING INNOVATION



Presentation of the Empowering People Award

Knorr-Bremse Global Care e.V. funded its own side award in the WASH area as part of the *empowering people. Award* by the Siemens Foundation. The AUTARCON GmbH team won the competition with its innovative drinking water filtration system, and was proud to receive the 20,000 euro prize. Christoph Günter represented the association and handed over the prize during the award ceremony in Cairo.

SEPTEMBER

ADDRESSING CHALLENGES



Panel discussion on climate change

Tony Rinaudo (World Vision), Dr. Sebastian Brandis (Stiftung Menschen für Menschen), Prof. Annette Menzel (TU Munich) and Martin Glöckner (Green City e.V.) presented different perspectives in an exciting discussion on climate change, its impacts, and countermeasures in front of 120 invited guests. The event was moderated by Julia Thiele-Schürhoff.

OCTOBER

THANKING PARTNERS



Birthday dinner for Knorr-Bremse Global Care North America Inc.

Representatives from partner organizations and Knorr-Bremse employees in the USA involved in the projects were invited to a birthday dinner for Knorr-Bremse Global Care North America Inc. It was a good opportunity to say thank you and get to know one another better.

OCTOBER

LEAVING NO ONE BEHIND



Opening of the Lernhaus in Mödling

The new KURIER Lernhaus in Mödling, Austria, was opened on October 21st, 2019. Knorr-Bremse Global Care e.V. funds the facility, which offers free learning materials for primary school students from socially disadvantaged families. Knorr-Bremse employees in Mödling support the project and volunteer to help tutor the children.

NOVEMBER

GROWING TOGETHER



First global workshop

A two-day workshop was held for the first time in November 2019 with participants from all Knorr-Bremse Global Care Organizations from Brazil, Germany, Hong Kong and the USA. The event resulted in agreements on joint future targets and an all-new, global team spirit!

WHO WE ARE

KNORR-BREMSE

global care

Knorr-Bremse Global Care is a globally active non-profit organization set up by Knorr-Bremse employees. Our goal is to offer new prospects to people who find themselves in need through no fault of their own. Knorr-Bremse Global Care supports projects by partner organizations in three areas: education, WASH (water, sanitation and hygiene) and emergency relief following natural disasters.

Knorr-Bremse Global Care works primarily in countries with Knorr-Bremse sites so that it can maintain direct contact, wherever possible, with the supported projects. This close vicinity sensitizes employees for social commitment and motivates them to play an active role themselves.

Knorr-Bremse Global Care was set up in 2005 following the devastating tsunami in South-East Asia and has since reached more than 750,000 people through some 300 projects. The Knorr-Bremse Group supports Knorr-Bremse Global Care through regular donations. This is one of the manifestations of corporate social responsibility at Knorr-Bremse.

THE MEMBERS OF KNORR-BREMSE GLOBAL CARE E.V.

From the left:
Andreas Wimmer,
Julia Thiele-Schürhoff,
Nadia Thiele,
Eva Seifert,
Alexandra Rappl,
Rasso Böck,
Mario Beinert,
not pictured:
Christoph Günter
(until Dec 31, 2019)



OUR GLOBAL STRUCTURE

Knorr-Bremse Global Care is active worldwide. We ensure our work is firmly anchored in the local community with three regional organizations: Knorr-Bremse Global Care North America Inc., Knorr-Bremse Global Care Asia Pacific Ltd. and Knorr-Bremse Global Care e.V. in Munich.

Over the last two years, two questions in particular have engaged us: How can we expand our local activities in the countries where Knorr-Bremse sites are located? And how can we integrate more group employees into the work of Knorr-Bremse Global Care at the same time? We believe that someone who understands a country's culture, speaks their language and is familiar with local needs and customs will be able in the long term to work more effectively and reach the local people better.

At the end of 2019, both Knorr-Bremse Global Care North America Inc., headquartered in the USA, and Knorr-Bremse Global Care Asia Pacific Ltd., headquartered in Hong Kong, were fully developed, officially registered and recognized by the respective tax authorities as non-profit organizations. Both organizations are composed of a volunteer executive board and members. All are current or former employees of the Knorr-Bremse Group. Both of the newly founded units are legally independent organizations, and have their own finances for use in project funding. They independently select funding projects, finance these with their own resources, and support project development.

The association, which is headquartered in Munich, provides consistency and coordination on both the global strategic focus and external communication. It coordinates all topics relevant for the three Knorr-Bremse Global Care organizations.

OUR SUCCESS FACTORS



From our perspective, a funding project is successful when it reaches the goals set for it, when it contributes to positive, sustainable changes in the target group, and the funds we provide are used efficiently. Several key success factors for projects have come to the fore: establishing content focal areas, entering into partnerships with trusted partners, defining clear goals and ways to measure them, and deploying Knorr-Bremse employee expertise in a targeted manner.

Knorr-Bremse Global Care concentrates the majority of its project activities on countries where sites of the Knorr-Bremse Group are located. There are sites in 31 countries worldwide. In addition, the organization funds development projects in ten additional countries where it has been working for many years: Cambodia, Colombia, Ethiopia, Ghana, Kenya, Myanmar, Peru, Sri Lanka, Tanzania and Ukraine.

We consider ourselves to be a professional partner in financing, monitoring and supervising development projects worldwide. We base our work on close collaboration with international and local partner organizations. They are responsible for project management on site, efficient and effective project implementation, and project documentation.

We set impact targets for each project alongside our partners. This allows us to achieve as many positive outcomes as possible for both the target group and for society as a whole. We invest knowledge, energy and resources in projects and programs that open up new perspectives for people.

Some projects are supported by mentors. In addition to our board members and other officeholders within the individual Knorr-Bremse Global Care organizations, employees of the Knorr-Bremse Group may also play this role. "Project Champions" act as mentors in North America, for instance. They are employees in local Knorr-Bremse Group companies who actively support funding projects. They often support specific projects by partner NGOs based on their particular job profiles. In addition, they may also serve as volunteer supporters in local organizations. Corporate project management and controlling, paired with the experience offered by our partner organizations, are key factors in project success. This combination and the intensive and personal project supervision are key factors, ensuring the long-term impact of our cooperations in the interest of the beneficiaries reached. Knorr-Bremse Global Care's approach, therefore, differs from that of many other funding organizations.



THE TEAM

From the left:
Thomas Steiner (until Dec 31, 2019),
Sylvia Bytow-Weißheimer,
Patrick Ruppenthal



HOW WE WORK

OUR FUNDING AREAS

Knorr-Bremse Global Care focuses on three funding areas: education, WASH (water, sanitation and hygiene) and emergency relief. We are convinced that education is the key to a better future, and that it should be the right of every person. We work on projects along the entire education pathway – from kindergarten and elementary school to secondary school and vocational training. As a company-funded organization, we are particularly interested in vocational education. We also work worldwide to ensure access to clean drinking water, to improve sanitation infrastructure and to promote hygiene, as well as for the efficient use of water resources. In some cases, Knorr-Bremse Global Care supports emergency relief for natural disasters in countries besides our focus countries.

FUNDING PRINCIPLES

Knorr-Bremse Global Care focuses on two central concerns: promoting the independence and autonomy of needy people and supporting high-impact projects and programs. This is the only way the organization can contribute to changes in society that are structurally relevant and that have a broad impact, open up new prospects for people and achieve long-lasting results. Knorr-Bremse Global Care primarily supports communities and groups instead of individuals. All of Knorr-Bremse Global Care's funding principles, application forms for the respective regional offices, and further information on how the organization selects its projects are available at www.global-care.eu.

OUR CONTRIBUTION TO THE SUSTAINABLE DEVELOPMENT GOALS

The United Nations Agenda 2030, enacted in September 2015, includes 17 global Sustainable Development Goals (SDGs) and 169 targets. These Sustainable Development Goals (SDGs) are aimed at governments, businesses, organizations and every individual around the world. The goals for 2030 include, for example, promoting environmental and climate protection, fighting hunger, realizing equal opportunities in education and creating more peace and justice. The SDGs highlight the tremendous challenges facing humanity in the coming years. At the same time, they provide orientation, showing the changes that must take place to preserve the world for future generations.

Like the Knorr-Bremse Group, Knorr-Bremse Global Care is determined to contribute to the SDGs. In light of the key focus areas of our work, we have a particular interest in two of the global goals: SDG 4 "Quality Education" and SDG 6 "Clean Water and Sanitation."



COMMITMENT TO SDG 4



SDG 4 and its targets aim to ensure inclusive, equitable, quality education and facilitate lifelong learning. Everyone should have access to affordable, high-quality education, from primary schooling through to vocational education and university studies. This is what creates the global conditions for decent work and balanced economic growth.

Knorr-Bremse Global Care pursues this argument wholeheartedly by supporting educational projects, since education is key to professional and societal advancement.



TARGET



By 2030, ensure that all girls and boys complete free, equitable and quality primary and secondary education leading to relevant and effective learning outcomes.

GLOBAL CHALLENGE



Globally, almost 20% of all school-age children are not enrolled in either primary or secondary school. Of those who are enrolled, six out of ten children and youths do not achieve a minimum level of competence in reading and math – a total of 617 million children worldwide.¹

OUR CONTRIBUTION



In 2019, Knorr-Bremse Global Care was able to **provide 450 schoolchildren access to high-quality primary and secondary education** and also supported them in improving their school performance.

1 | UIS.STAT, UNESCO Institute of Statistics 2019 (data: 2017)

TARGET



By 2030, ensure that all girls and boys have access to quality early childhood development, care and pre-primary education so that they are ready for primary education.

GLOBAL CHALLENGE



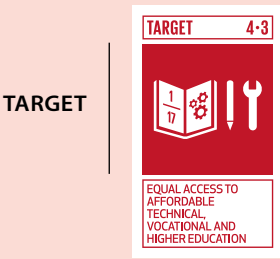
Early childhood education is an effective tool to improve school performance and prevent later social inequality. However, globally over 175 million children do not have access to attend kindergarten. This is roughly half of all pre-school age children. In low-income countries, only one in five children is enrolled in pre-school education.²

OUR CONTRIBUTION



521 pre-school age children were able to receive **quality early childhood education** in pre-school institutions in 2019 thanks to Knorr-Bremse Global Care.

2 | A World Ready to Learn: Prioritizing quality early childhood education, UNICEF 2019



TARGET

By 2030, ensure equal access for all women and men to affordable and quality technical, vocational and tertiary education, including university.

GLOBAL CHALLENGE



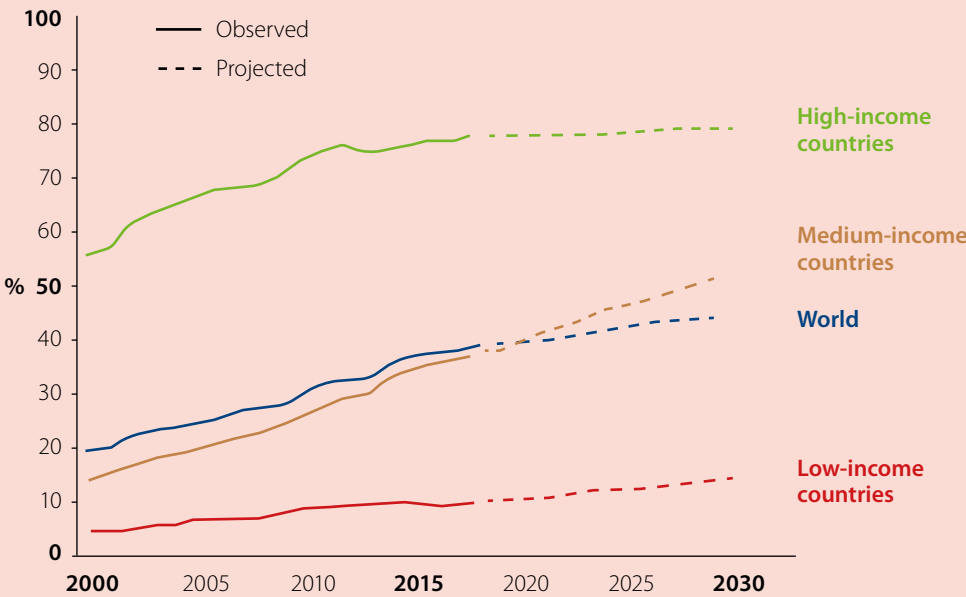
The global youth unemployment rate of almost 13% is still far above average for global unemployment as a whole.³ Although people with a tertiary education are more likely to be in employment and less likely to be affected by long-term unemployment,⁴ globally just 38% of teenagers and young adults are enrolled in a tertiary educational program.⁵

OUR CONTRIBUTION



In 2019, Knorr-Bremse Global Care enabled **207 teenagers and young adults to gain access to high-quality technical training**, including career guidance measures.

TERTIARY EDUCATIONAL ENROLLMENT RATIO FROM 2000 TO 2017 AND PROJECTED TO 2030⁶



Although the enrollment rate in educational programs and universities has grown over the last two decades, there are drastic differences between different parts of the world: The tertiary education enrollment ratio ranges from 9% of all teens and young adults of the same age in low-income countries to 77% in high-income countries.

3 | 5 | World Bank Open Data, World Bank 2019 (data: 2018/2019)
4 | 7 | Education at a Glance 2019 – OECD Indicators, OECD 2019 (data: 2018)
6 | Global Education Monitoring Report, UNESCO Institute for Statistics (UIS) 2019



TARGET

By 2030, substantially increase the number of youth and adults who have relevant skills, including technical and vocational skills, for employment, decent jobs and entrepreneurship.

GLOBAL CHALLENGE

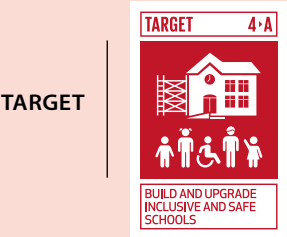


Using information and communication technology is a key skill that young people and adults need for the working world. On average, just 5% of young people and adults worldwide can write computer programs in a programming language. Less than 30% of young people and adults worldwide have ever created an electronic presentation using presentation software.⁷

OUR CONTRIBUTION



403 young people in 2019 gained **technical or vocational qualifications** and skills **to prepare them for the working world** and increase their chances of finding a job.



TARGET

Build and upgrade education facilities that are child, disability and gender sensitive and provide safe, non-violent, inclusive and effective learning environments for all.

GLOBAL CHALLENGE



Just 68.6% of all schools worldwide are equipped with basic access to electricity, the internet, computers, learning materials, drinking water, and sanitation facilities. In low-income countries, just 32% of schools have this basic equipment.⁸

OUR CONTRIBUTION



1,958 children were able to learn in a **safe and appropriate environment thanks to improved infrastructure**, or received the school materials they need to do so.

8 | UIS.STAT, UNESCO Institute of Statistics 2019 (data: 2018)

TARGET 4.1


FREE PRIMARY AND
SECONDARY
EDUCATION

ENSURING ALL GIRLS AND BOYS CAN COMPLETE
FREE, QUALITY AND EQUAL PRIMARY AND
SECONDARY SCHOOL EDUCATION.


**GLOBAL
CHALLENGE**


Six out of ten children and young adults who go to school worldwide do not achieve a minimum level of competence in reading and math, despite attending school.⁹

**REGIONAL
CHALLENGE**


In most OECD countries, school performance is highly dependent on socioeconomic background. On average, **just 25.2% of disadvantaged students achieve a level of performance that fulfills the minimum requirements in these countries.**¹⁰

**LOCAL
CHALLENGE**


Despite a high level of development in education, even in Austria **just 78% of children and young adults achieve the minimum level of reading competence required after completing secondary level I.** In the field of mathematics the figure is also just 77.5%.¹¹

**LOCAL
CHALLENGE**


Children from educationally disadvantaged backgrounds perform worse at school and are less likely to graduate from university: Children in Austria whose parents have only completed compulsory schooling achieve scores around 90 points lower on the PISA test than students whose parents have higher academic credentials. **This corresponds to a difference in performance of roughly two years of school.**¹²

9 | 11 | UIS.STAT, UNESCO Institute of Statistics 2019 (data: 2017)

10 | Education at a Glance 2019 – OECD Indicators, OECD 2019 (data: 2018)

12 | PISA 2018 Database, OECD 2019 (data: 2018)




OUR CONTRIBUTION TO QUALITY BASIC EDUCATION

The new KURIER Lernhaus in Mödling opened on October 21st, 2019. The project provides free tutoring for primary school students from socially disadvantaged families. The children learn in small groups and without pressure, do their homework, and practice for schoolwork and tests. In addition to studying and preparing for school, the Lernhaus also supports cultural exchange, offering joint activities like museum visits, outings or workshops – activities that would otherwise not be part of these children’s everyday lives. These tutoring facilities were initiated by the Austrian non-profit organization KURIER AID Austria.

They are operated by the Red Cross, and staffed by professional employees and many volunteers. Knorr-Bremse Global Care e.V. works with employees at the local Knorr-Bremse site to support the newly opened facility in Mödling. The goal is to close gaps in basic knowledge for 15 children each year during the first two years. This should ensure they can complete their primary education successfully as well as graduate from secondary school. This may help prevent children from being left behind in society and being predestined to experience poor educational success.

LEARNING TOGETHER AND IMPROVING OPPORTUNITIES

Project site	Mödling, Austria
Target group	15 socially and educationally disadvantaged primary school students
 Funding amount	72,000 euros
Partner organizations	KURIER Aid Austria, The Red Cross of Lower Austria
Term	September 2019 – August 2021



TARGET 4.3



EQUAL ACCESS TO AFFORDABLE TECHNICAL, VOCATIONAL AND HIGHER EDUCATION

ENSURING EQUAL ACCESS FOR ALL WOMEN AND MEN TO AFFORDABLE, QUALITY PROFESSIONAL, VOCATIONAL AND TERTIARY EDUCATION, INCLUDING UNIVERSITY EDUCATION.



GLOBAL CHALLENGE



Globally, just 38% of teenagers and young adults complete a vocational training or a university degree program.¹³

REGIONAL CHALLENGE



Although the youth unemployment rate in the USA is 9.1% and therefore less than the global average, it is more than twice as high as the general unemployment rate in the USA. Young African Americans are disproportionately affected by the issue, with an unemployment rate of 14.6%.¹⁴

LOCAL CHALLENGE



Social inequality is also reflected in access to tertiary education.

In the USA, this is influenced significantly by parental income. 90% of children whose parents are among the top 10% income-earners enter into university studies. When parents are within the bottom 10% earners, this figure reaches a rate of just 20 - 30%.¹⁵

13 | World Bank Open Data, World Bank 2019 (data: 2018)

14 | Employment and Unemployment Among Youth Summary, U.S. Bureau of Labor Statistics 2019

15 | World Inequality Report 2018, World Inequality Lab 2017

TARGET 4.3



EQUAL ACCESS TO AFFORDABLE TECHNICAL, VOCATIONAL AND HIGHER EDUCATION




© Mark Adams Pictures

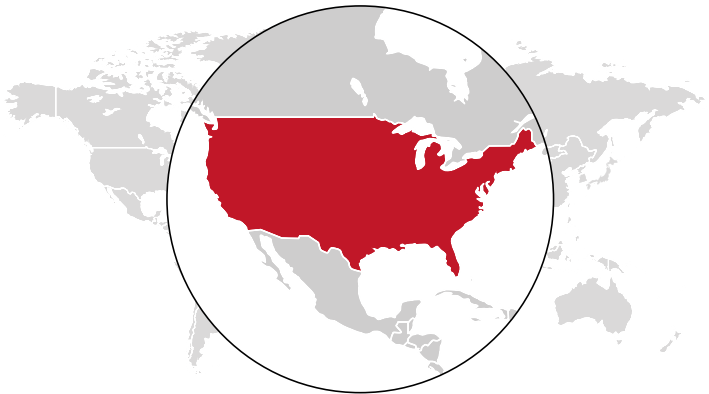
OUR CONTRIBUTION TO EQUAL ACCESS TO TECHNICAL EDUCATION

In the US state of Ohio, almost 15% of the population lives on an income below the poverty line. This impacts children and teens from ethnic minorities twice as often as others. At the same time, manufacturing companies struggle to fill the many open skilled production jobs available that require technical education. An empty garage in Garfield Heights, a city in northeast Ohio, and a nonprofit launched by hobby mechanics, is doing something about both. The "Kickstart for Hope" program is the fruit of a joint effort of two local nonprofit organizations – Motogo, and Boys Hope Girls Hope, with the goal of offering training courses for

124 young people. The program helps teens learn practical technical skills by working on motorcycles under supervision. The purpose of the partnership is to provide career pathways to young people and help them achieve their full potential. They gain an introduction to the technical world through a curriculum including practical content on engine technology, maintenance, and occupational protection. A Bendix employee serves as "Project Champion," regularly reviewing the progress of the project and participating in workshops. These provide vocational orientation and continued training.

FIXING THE FUTURE

Project site	Ohio, USA
Target group	124 at risk youth
 Funding amount	50,000 US Dollar
Partner organizations	Boys Hope Girls Hope, Motogo
Term	June 2019 – May 2020



COMMITMENT TO SDG 6



SDG 6 involves providing access for all to a sufficiently clean supply of drinking water and to appropriate sanitation. The focus is on sustainable and efficient water management, and on strengthening community responsibility for it.

Knorr-Bremse Global Care supports projects in the areas of water, sanitation and hygiene. Clean and safe drinking water, sanitation and hygiene training, as well as quality wastewater disposal, protect communities from illness and increase life expectancy. This forms the foundation for living, educational and development prospects.



By 2030, achieve universal and equitable access to safe and affordable drinking water for all.

GLOBAL CHALLENGE



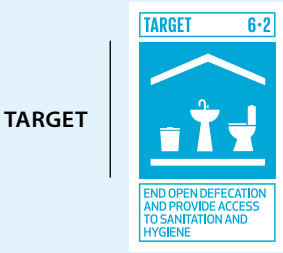
Drinking water is crucial for life, but globally 2.2 billion people have no access to clean water. 785 million people live without even a basic supply of drinking water.¹⁶

OUR CONTRIBUTION



26,386 people worldwide received **access to fresh and clean drinking water in 2019** thanks to Knorr-Bremse Global Care.

16 | United Nations Water Report 2019, UNESCO 2019 (data: 2015)



TARGET

By 2030, achieve access to adequate and equitable sanitation and hygiene for all and end open defecation, paying special attention to the needs of women and girls and those in vulnerable situations.

GLOBAL CHALLENGE



Globally, the situation of sanitation has improved significantly over the last two decades. However, almost 60% of the global population still have no access to appropriate, professional sanitary facilities. 32% of all people do not even have a basic sanitary system.¹⁷

OUR CONTRIBUTION



Thanks to funding from Knorr-Bremse Global Care, last year **10,584 people worldwide received access to adequate sanitation** with appropriate hygiene.



TARGET

Support and strengthen the participation of local communities in improving water and sanitation management.

GLOBAL CHALLENGE



The only way to achieve long-term success for WASH initiatives is by getting local communities involved in water and sanitary management. However, global involvement by local communities is still low to moderate.¹⁸

OUR CONTRIBUTION



Overall, a total of **18,275 members of different communities** were involved directly in projects through **training, engagement or employment** in order to **reinforce their local personal responsibility** over the long term.

17 | Joint Monitoring Programme for Water Supply, Sanitation and Hygiene (JMP), WHO/UNICEF 2019 (data: 2017)

18 | SDG 6 Data Portal, UN-Water 2019 (data: 2017)

TARGET 6.1


SAFE AND
AFFORDABLE
DRINKING WATER

ACCESS TO SAFE AND AFFORDABLE
DRINKING WATER.

**GLOBAL
CHALLENGE**


Globally, 2.2 billion people have no access to safely managed water. 785 million people live without even a basic supply of drinking water.¹⁹

**REGIONAL
CHALLENGE**


Half of the world's 785 million people without basic access to clean drinking water live in Sub-Saharan Africa.²⁰

**LOCAL
CHALLENGE**


Access to an appropriate supply of drinking water has increased in Ethiopia over the last few decades. However, of the 85 million people who live in rural Ethiopia, over 67% do not have basic access to drinking water. Not even 5% of people in the country have access to a safely managed source of drinking water.²¹

19 | United Nations World Water Report 2019, UNESCO 2019 (data: 2015)

20 | 21 | Joint Monitoring Programme for Water Supply, Sanitation and Hygiene (JMP), WHO/UNICEF 2019 (data: 2017)

TARGET6·1



SAFE AND AFFORDABLE DRINKING WATER



© Axel Fassio/arche noVa

OUR CONTRIBUTION TO SAFE DRINKING WATER

The Somali region of southern Ethiopia is home to many shepherds who make their living from raising livestock on the natural landscape. This region, which borders on Somalia, suffers from drought due to irregular rainfall and the clear effects of climate change. Water resources are scarce and not enough water is available for bodily hygiene needs, resulting in poor nutrition and diarrhea. To combat this problem, German aid organization arche noVa e.V. is working alongside its local Ethiopian partner OWDA to ensure a long-term supply of clean drinking water. Knorr-Bremse Global Care e.V. supports two birkas, which are traditional rainwater collection basins, each with a capacity of 800,000 liters.

They provide access to water during the dry season. In addition, twelve hygiene and sanitary specialists are trained who can raise awareness of the connection between water, hygiene and health in communities and teach appropriate practices. Four newly formed water committees have been established to ensure the long-term success of the water supply. Besides simply ensuring a supply of water, this has also helped people in the area achieve a better level of nutrition. People are able to eat two meals a day.

CATCHING THE RAIN

Project site	Somali Region, Ethiopia
Target group	6,922 persons affected by severe drought
Funding amount	120,000 euros
Partner organizations	arche noVa e.V., Organization for Welfare and Development in Action
Local coordination	Organization for Welfare and Development in Action (OWDA)
Term	March 2019 – March 2020



TARGET 6.2



END OPEN DEFECTION
AND PROVIDE ACCESS
TO SANITATION AND
HYGIENE

ACCESS TO APPROPRIATE, EQUITABLE SANITATION
AND HYGIENE.



© CARE/Chrysalis: Dambetenne Village, Sri Lanka

GLOBAL CHALLENGE



4.3 billion people do not have access to safely managed sanitation facilities – almost two-thirds of the world's population.²²

REGIONAL CHALLENGE



While the situation of sanitation worldwide is improving, in Sub-Saharan Africa and in central and southern Asia it is still precarious.²³ **In central and southern Asia, over 380 million people are forced to practice open defecation.**²⁴

LOCAL CHALLENGE



Although only around 5% of the population do not have access to basic sanitary facilities in Sri Lanka, over 100,000 people still have to practice open defecation. **Overall, more than 878,000 people in Sri Lanka still lack access to basic sanitation.**²⁵

22 | 24 | United Nations World Water Report 2019, UNESCO 2019 (data: 2015)

23 | 25 | Joint Monitoring Programme for Water Supply, Sanitation and Hygiene (JMP), WHO/UNICEF 2019 (data: 2017)



OUR CONTRIBUTION TO APPROPRIATE SANITATION

Proper toilets help protect health and privacy, and ensure human dignity. However, going to the bathroom is still a significant challenge for half of all humanity. This is the case for the Sri Lankan population, where a majority of people work on tea plantations during the day. In many areas, there are no facilities for discreetly relieving oneself. This is particularly a concern for female plantation workers, resulting in problems like snake bites, sexual harassment and a general feeling of discomfort on a daily basis. Chrysalis and CARE Deutschland e.V. are working to meet this challenge and create solutions.

Knorr-Bremse Global Care e.V. supports them by establishing access to drinking water as well as new and appropriate community latrines. The goal is to not only improve quality of life for local people, but also improve their health by avoiding contamination of drinking water. This creates a basic environment for ensuring beneficiaries more self-worth, safety and health, resulting in less missed work time and higher incomes.

TOILETS CREATING DIGNITY

Project site	Uva and Central Province, Sri Lanka
Target group	6,086 village residents without access to drinking water or sanitation
Funding amount	100,000 euros
Partner organization	CARE Deutschland e.V.
Local coordination	Chrysalis
Term	December 2018 – January 2020



OUR CONTRIBUTION TO SOCIAL ENTREPRENEURSHIP

Knorr-Bremse Global Care is a corporate-funded non-profit organization closely tied to the Knorr-Bremse Group. Because of this, we use corporate approaches to overcome global challenges. We support programs for developing entrepreneurial skills among young people through educational projects, and in the reporting year focused specifically on social business funding opportunities.

For us, it is very important to support effective agents and their ideas. This allows them to grow with their business models, generating true added value in the form of social impact in their communities. At the same time, in the medium term the goal is to establish a successful business that can be self-financing.

We worked with Yunus Social Business (YSB) in 2019. The organization was founded in 2011 by Nobel Prize winner Muhammad Yunus, founder of the Grameen Bank, and other partners in five different countries. YSB's goal is to fight poverty by creating financially sustainable social businesses. To do so, they convert philanthropic capital into credit and consulting services. They use these funds, in turn, to support and develop selected social businesses. Our donation to YSB was used to fund a total of three social businesses.

Estante Mágica from Rio de Janeiro in Brazil is one of these. The company gives primary school students the opportunity to write and design their own books. This helps them gain reading and writing skills and reinforce what they learn in their schooling. Schools cooperating with Estante Mágica receive access to an online platform with book-making materials. When the books are finished at the end of the school year, parents can purchase different hard-copy versions. Their success is impressive: Over 4,500 schools throughout Brazil have taken part in the program so far, and over 400,000 students have already received their books.

WASH-SIDE AWARD FOR AUTARCON

We launched another new cooperation last year with the Siemens Foundation. The organization has created the *empowering people. Network* as a platform for addressing social problems with low-tech solutions. The network offers training sessions, consultancy and workshops to its members. In addition, it also regularly gives an award to honor the best solutions in areas like energy, waste management, health, mobility, financial technology and education. Knorr-Bremse Global Care e.V. supported the 2019 award, offering a special prize of 20,000 euros for the best WASH solution. Christoph Günter represented Knorr-Bremse Global Care e.V. in giving the award to AUTARCON GmbH during a ceremony in Cairo in July 2019. The SuMeWa|SYSTEM developed by AUTARCON produces clean drinking water by oxidizing salt in water, without any chemical additives and without the use of filters. The system is low-maintenance, uses no mechanical components and is therefore very well suited to remote areas of developing countries.



EMERGENCY RELIEF ACTIVITIES

Knorr-Bremse Global Care supports emergency relief projects in the wake of natural disasters and armed conflicts. This helps people who have lost everything – directly and with minimum bureaucracy. In order to prevent humanitarian disasters, the victims need to receive drinking water, hygiene products, food and medical care as quickly as possible. They often have to take shelter in emergency accommodation, and this situation can continue for a long period of time. Emergency relief following the 2004 tsunami was what led to the establishment of Knorr-Bremse Global Care, and it remains one of the organization's three pillars of activity.

THE EXISTENTIAL THREAT OF CLIMATE CHANGE

Heat stroke, drought, wildfires, crop failures and flooding: According to forecasts by the World Bank, the consequences of climate change could cause well over 140 million people worldwide to lose their homes by 2050.²⁶ Between 2030 and 2050, climate change will likely cause 250,000 deaths per year due to malnutrition, malaria, diarrhea and heat stress.²⁷

FORCES OF NATURE

Flooding and storms drove more people from their homes in 2019 than any other natural hazard. During the first half of last year alone, seven million people were forced to leave their homes.²⁸ Between 1998 and 2017, over 526,000 people died as the direct consequence of extreme weather events.²⁹

CYCLONES

If global warming continues as projected during the twenty-first century, then extreme weather events will become not only more frequent, but also more intense.³⁰ Tropical cyclone Idai last year was already one of the most powerful cyclones ever seen on the eastern coast of Africa. In that area alone, over 251,000 people were displaced in three countries, and over 900 people lost their lives.³¹

OUR CONTRIBUTION



Aid organizations, official agencies and small-scale farmers were **trained in emergency relief and prevention measures** during 2019 with the support of Knorr-Bremse Global Care. A total of **1,500 people** benefited from functional emergency management in the aftermath of extreme weather events and their consequences. They are able to **protect themselves and their livelihoods** and adapt to the impacts of climate change.

Furthermore, during 2019 Knorr-Bremse Global Care was able to help **15,000 people deal with the consequences of natural disasters**, supporting them with the supply of drinking water they need.

26 | Groundswell: Preparing for Internal Climate Migration, World Bank 2018

27 | 30 | Climate change and health, World Health Organization (WHO) 2018

28 | WMO Provisional Statement of the State of the Climate 2019, World Meteorological Organization 2019

29 | Global Climate Risk Index 2019, Germanwatch 2019 (data: 2017)

31 | Southern Africa, Cyclone Idai Snapshot, UN OCHA 2019



© Deutsches Rotes Kreuz e.V.


OUR CONTRIBUTION TO EMERGENCY RELIEF FOLLOWING THE CYCLONE

In March 2019, cyclone Idai hit Mozambique, Malawi and Zimbabwe with wind speeds of 190 km/h. Almost two million people were affected by the catastrophe, many of them losing their homes and livelihoods. For over 900 people, help arrived too late as they died from the natural disaster. The World Bank estimated property damage caused by the cyclone at over two billion US dollar. Directly after the extent of the disaster became clear, Knorr-Bremse Global Care e.V. took the initiative and provided 50,000 euros to the Red Cross to rehabilitate WASH infrastructure.

These funds were used for projects like restoring operations at Nhamatanda hospital to serve up to 325,000 people. During the project, around 10,000 people received medical care – 253 of them cholera patients. This was a significant local contribution to basic care for those affected, and to preventing the spread of disease caused by contaminated water.

The danger of a cholera epidemic has been averted, although around 100,000 people have still been unable to return to their villages as of January 2020.

CLEAN DRINKING WATER

Project site	Beira, Mozambique
Target group	15,000 people without access to clean drinking water
 Funding amount	50,000 euros
Partner organization	German Red Cross
Term	April 2019 – June 2019



EVALUATION 2019

In 2019, Knorr-Bremse Global Care supported 66 projects worldwide in 23 countries, with a funding volume of 1.743 million euros. These projects benefited 53,673 people.

These consolidated figures are combined based on the activities of three individual organizations:

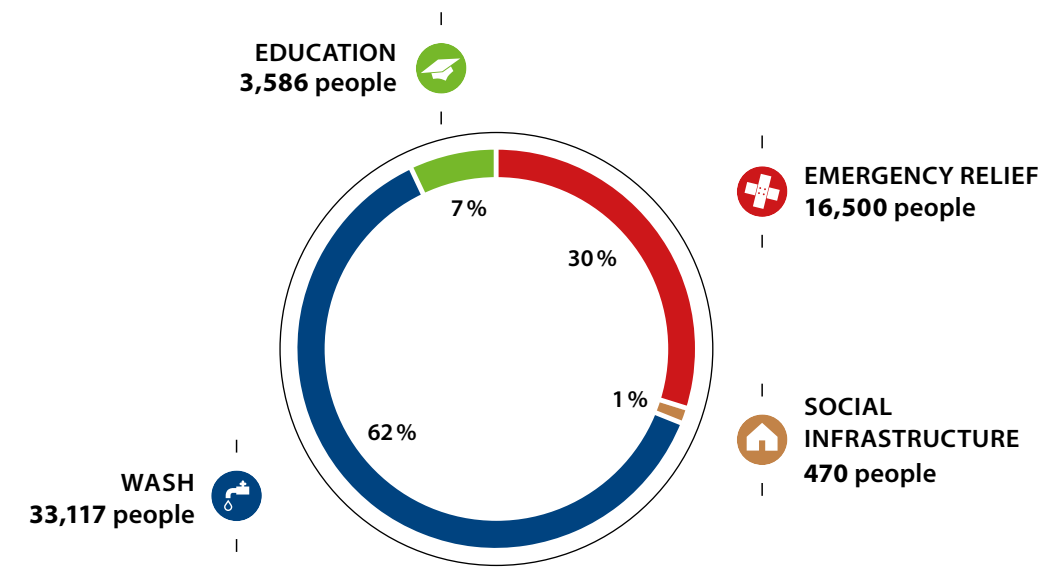
Knorr-Bremse Global Care e.V. supported 52 projects in 20 countries with a total volume of 1.35 million EUR. 52,778 people benefited from the supported projects.

Knorr-Bremse Global Care North America Inc. supported ten projects in two countries, with a total of 250 TEUR. These benefited around 885 people.

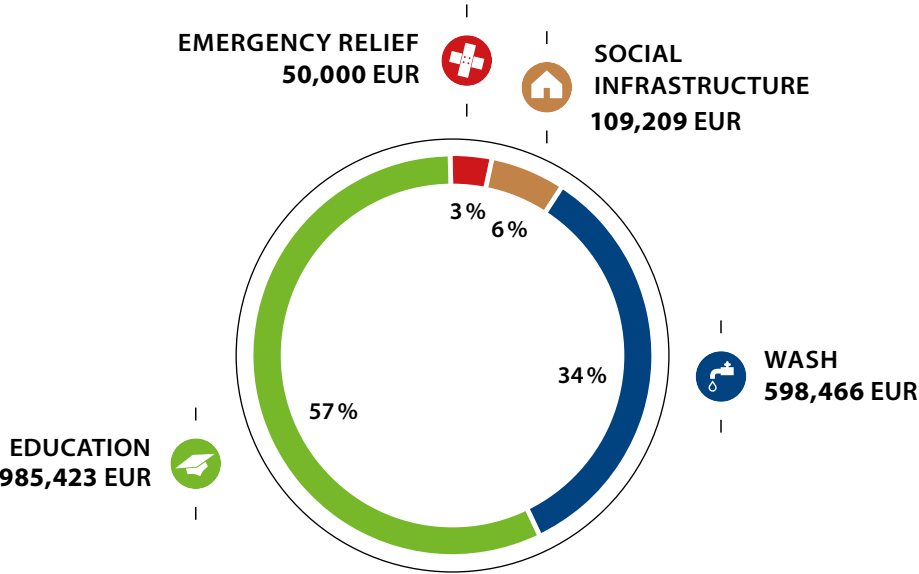
In Asia, Knorr-Bremse Global Care Asia Pacific Ltd. supported four projects in three countries with a total funding amount of 144 TEUR. The projects were launched in the last quarter of 2019, and so far have directly benefited ten people.

The following analyses refer to total expenditures and the number of beneficiaries worldwide.

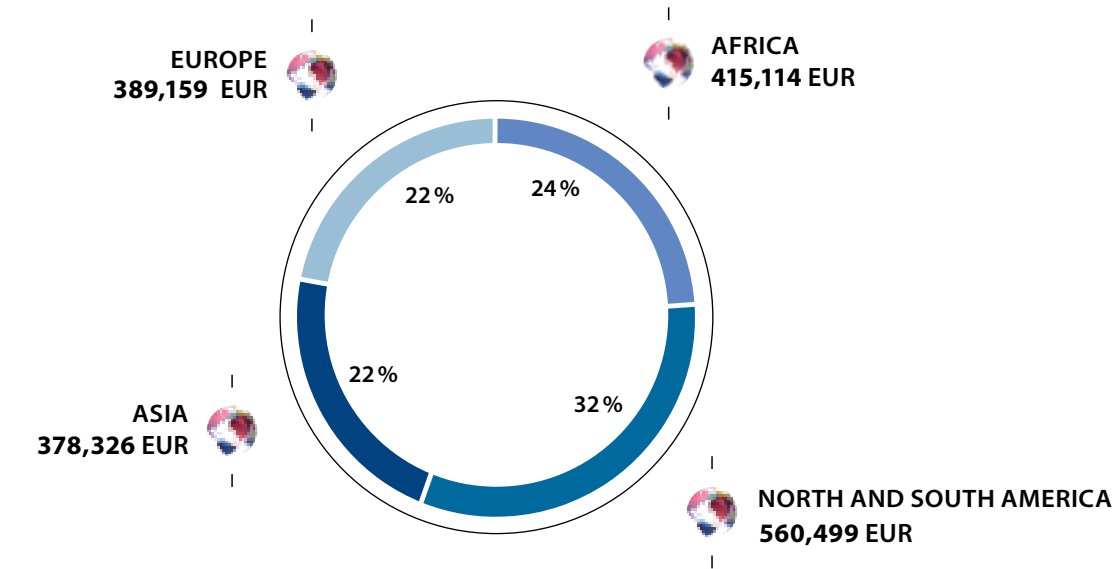
NUMBER OF BENEFICIARIES BY FUNDING AREA



EXPENDITURE BY FUNDING AREA



EXPENDITURE BY REGION



THANK YOU!

Once again this year, we would like to end this report by thanking all those who make it possible for us to carry out our work successfully. Without the consistent support of all Knorr-Bremse employees and the economic success of the Knorr-Bremse company, Knorr-Bremse Global Care would not exist in the Asia Pacific, European or North American regions. We wish to express particular thanks to our colleagues at Knorr-Bremse sites in Australia, Austria, Brazil, China, Germany, Hungary, India, Mexico, Poland, South Africa, Spain and the USA.

Their outstanding support and high level of passion and commitment to our project work make Knorr-Bremse Global Care what it is today.

In particular, we would like to thank our global donors from the Knorr-Bremse Group: These are Knorr-Bremse AG, Knorr-Bremse Systeme für Schienenfahrzeuge GmbH, Knorr-Bremse Systeme für Nutzfahrzeuge GmbH and Knorr-Bremse Asia Pacific (Holding) Limited as well as the Knorr Brake Holding Corporation.

Furthermore, we would like to give a big thank-you to all of our individual donors, friends and supporters. Their interest, commitment and trust help us to continue pursuing the aims of Knorr-Bremse Global Care and the global Sustainable Development Goals, and to face the enormous challenges of the future together.

The following is a list of our project partners in 2019, to whom we also extend our thanks for the successful implementation of the projects we supported.



African Sand Dam Foundation (ASDF)
Alliance for Working Together Foundation
Amandla Ku Lutsha
arche noVa e.V.
Ashoka Deutschland

Bendix Commercial Vehicle Systems LLC
Bendix Foundation
Boys and Girls Club of Westminster
Boys Hope Girls Hope
Breakthrough Schools
Bunte Münchner Kindl

CARE Deutschland e.V.
Chrysalis

Dein München e.V.
Deutsches Rotes Kreuz, Cruz Roja Peruana
Deutsche Welthungerhilfe e.V.
Don Bosco Mondo e.V.
DYWOSWIT

Evangelisches Stadtdekanat Frankfurt am Main

Förderverein Stückchen Himmel e.V.

German Toilet Organization e.V.
GO Foundation
Good360
Grundschule an der Hanselmannstraße

ICATEC
Instituto Anchieta Grajaú

Knorr-Bremse Global Care Asia Pacific Ltd.
Knorr-Bremse Global Care Brazil
Knorr-Bremse Global Care North America Inc.
KURIER Aid Austria

Masifunde Bildungsförderung e.V.
Metrum Berlin gGmbH
Missão Cantinho do Céu Aracaju-SE
Motogo

Norwegian Church Aid

Opciones Dignas
Organization for Welfare and Development in Action

Presbyterian Agricultural Services and Child Development
Programme (PAS-CDP)
Psiquiatria 2000 e.V.

Right to Play Deutschland e.V., Right to Play China

Salesians Life Choice Institute
Save The Children Hong Kong, Save the Children India
SBA Girassol
SENAI Brazil
Siemens Stiftung
Soziale Hilfe für werdende Mütter, gefährdete Frauen
und deren Kinder in Niederösterreich
Stiftung Kinderzukunft
Stiftung Palliativmedizin München
Szigethalom Community Development

Thüringisch-Kambodschanische Gesellschaft / COMPED
Tumelo Home

Urban Community School

Vocational Guidance Services

Water & Sanitation for the Urban Poor (WSUP)
World Vision Deutschland e.V., World Vision Tanzania

Yunus Social Business

Zeromski Hospital Kraków

PUBLISHING DETAILS

Published by

Knorr-Bremse Global Care e.V.
Moosacher Str. 80
80809 München
Deutschland

Responsible according to press law

Julia Thiele-Schürhoff, Knorr-Bremse Global Care e.V.

Concept

Patrick Ruppenthal, Knorr-Bremse Global Care e.V.

Editing

Sylvia Bytow-Weißheimer, Knorr-Bremse Global Care e.V.
Patrick Ruppenthal, Knorr-Bremse Global Care e.V.
Anna Samhammer, Knorr-Bremse Global Care e.V.
Ingo Woelk

Layout design

Anna Lilakewitsch, KB Media GmbH

Photography and image rights

Axel Fassio (cover image)
THE GLOBAL GOALS For Sustainable
Development, Project Everyone
(SDG icons)
Mundo Wolf (cover image)

Printing

Weber Offset, Munich
Papier: Enviro Clever U

